

Contents

- 3 Who Are We?
- 4 Story Behind Eco-Duo
- 5 Why you should specify Eco-Duo
- 7 Sustainability
- 9 Features & Benefits
- 10 Bristol University Case Study
- 11 BRE Study
- 13 Technical Information
- 15 WRAS and KIWA certifications
- 16 Associations

Who Are We?

Who?

Water Kinetics is a new and exciting innovative company that has been built on the many years of experience of one of its Founding Directors Maxwell Bridges and its Managing Director Jonathan Waggott. Water Kinetics is a UK based company with the manufacturing and offices located in Scotland. Water Kinetics specialises in bringing innovative change to the plumbing world by applying the research and benefits of science to the all important element of water.

What?

Water Kinetics aims to be the world leader in providing hygienic, safe, low energy hot and cold water within buildings of all types so that users are kept safe whilst delivering cost savings and substantial risk reduction from water-borne pathogens such as Legionella for building owners/operators.

How?

Water Kinetics' patented first product, Eco-Duo is the world's first single pipe recirculation system that can provide potable water in a safe way whilst delivering up to a 50% cost reduction in energy charges.

Water Kinetics works with leading industry experts, professionals and suppliers. Its products are available nationwide through leading builders merchants, so on-going supply is never an issue.

Awards:

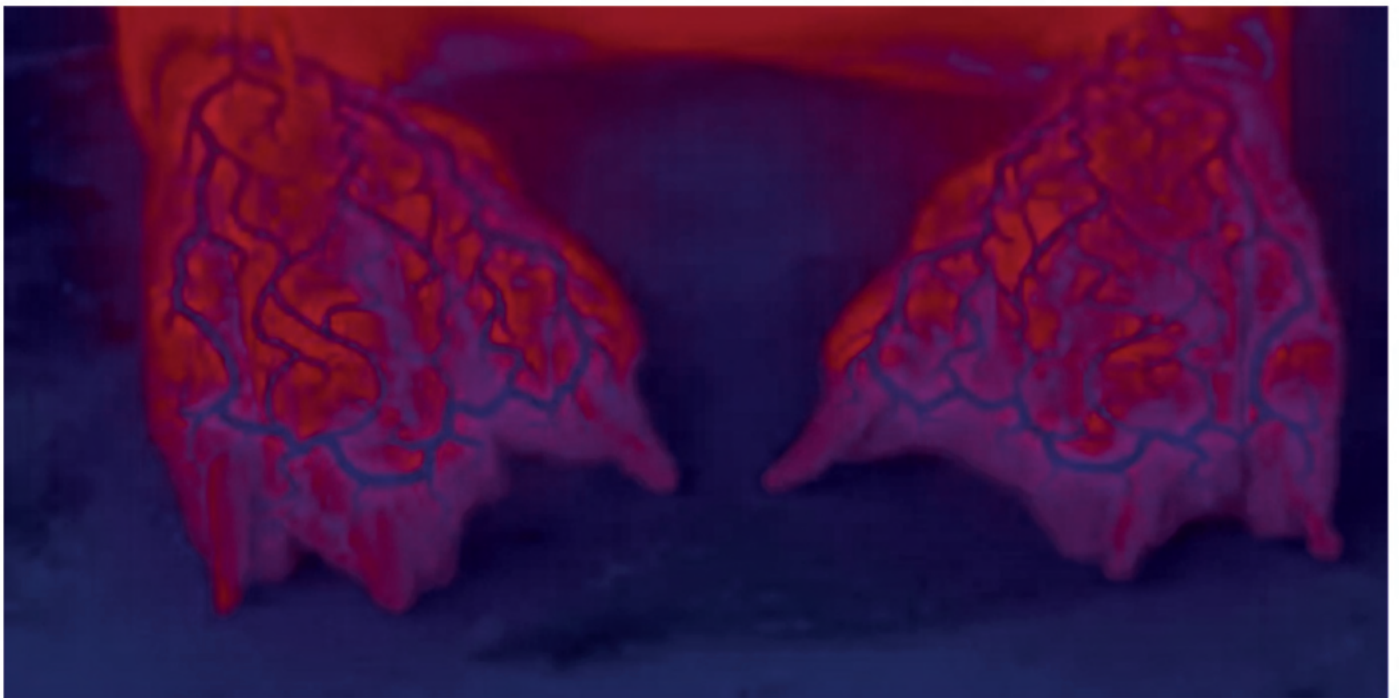


The Story Behind Eco-Duo

Water Kinetics are very proud to be part of the amazing story of how the new Eco-Duo system was invented. Maxwell Bridges, one of its founding Directors has always been someone to think about how things can be improved, and how solutions to problems can be found. Maxwell is also a great lover of nature documentaries, and it was whilst watching such a documentary on how penguins in the Antarctic keep warm and prevent their feet from sticking to the ice that a moment of inventive inspiration came upon him.

Penguins have an ingenious system working within their feet which creates a counter current heat exchange from the blood travelling to their feet which then warms their blood up as it travels back to their heart. Maxwell thought that if it can work for blood vessels, then it could work for pipework systems.

After much trial and error and testing and thought, the world's first single pipe recirculation system was born. Nature has so much to teach us, and Water Kinetics is sure that there will be many more inventions and innovative products still to be created from its inspiration.

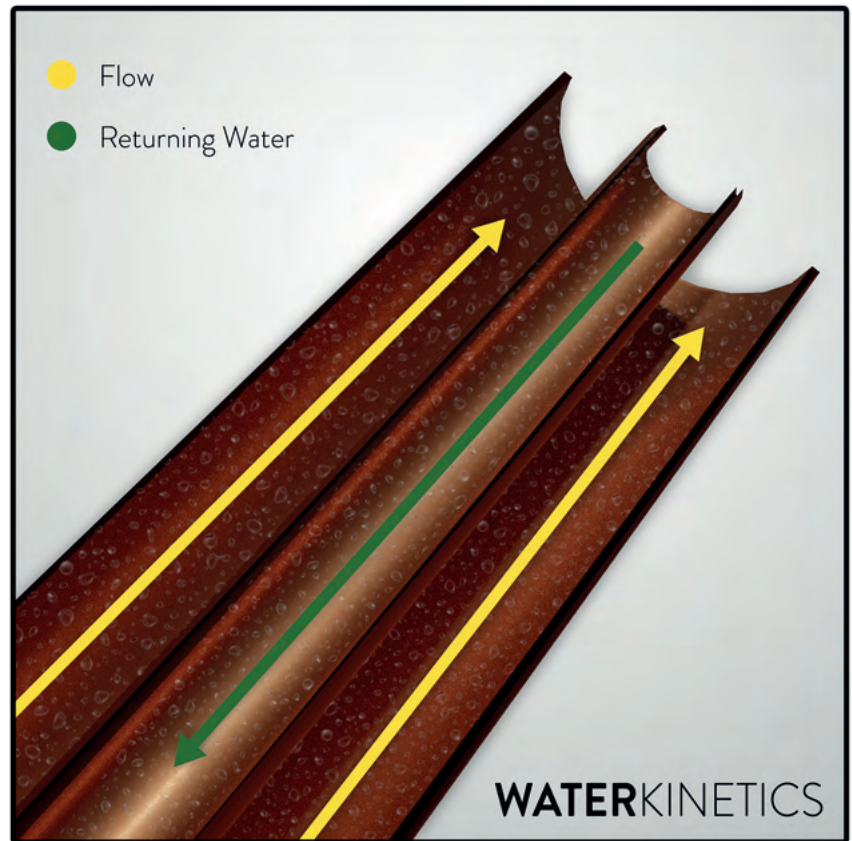




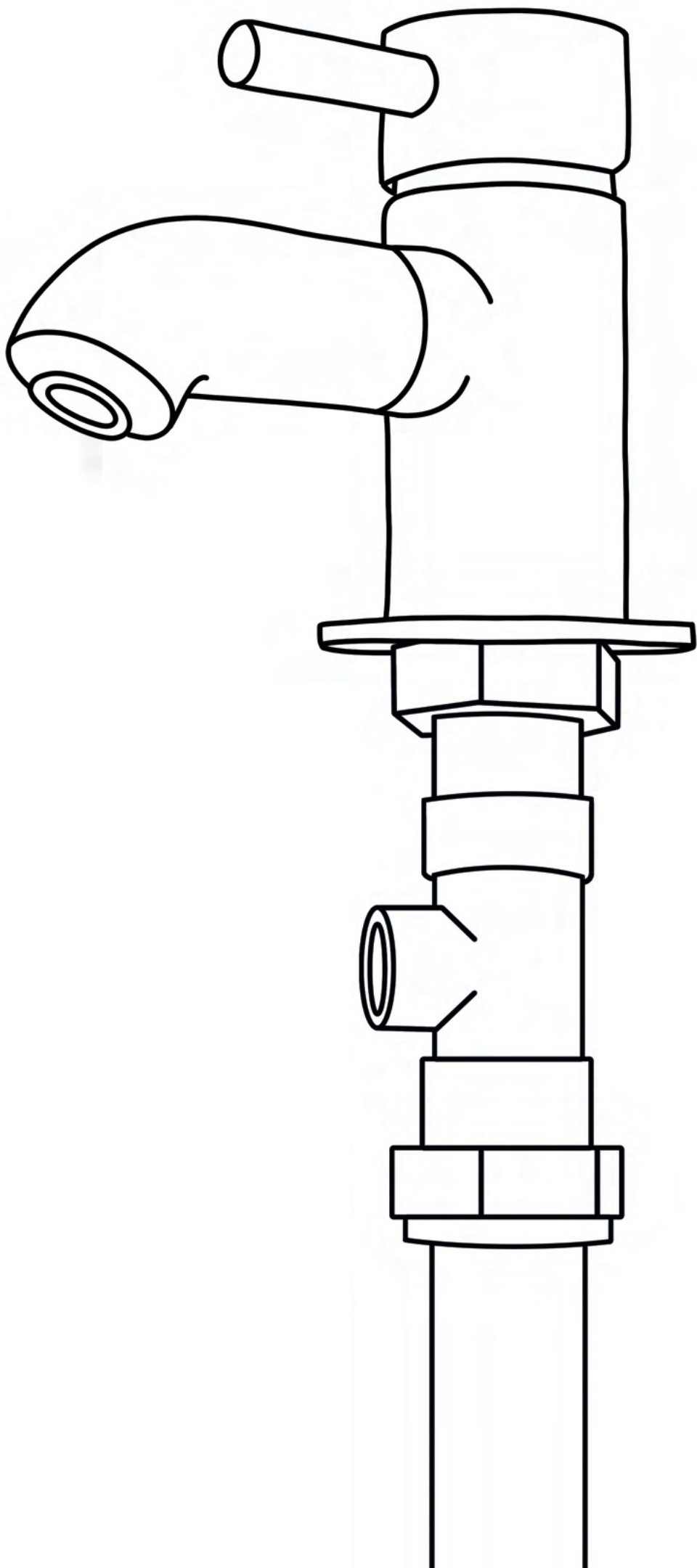
Why should you specify Eco-Duo?

Water Kinetics' Eco-Duo system is truly a game changer in the world of potable water plumbing technology. Not only does the system save 50% of energy costs, but it also halves all the pipework fittings, insulation and the time and costs of installation.

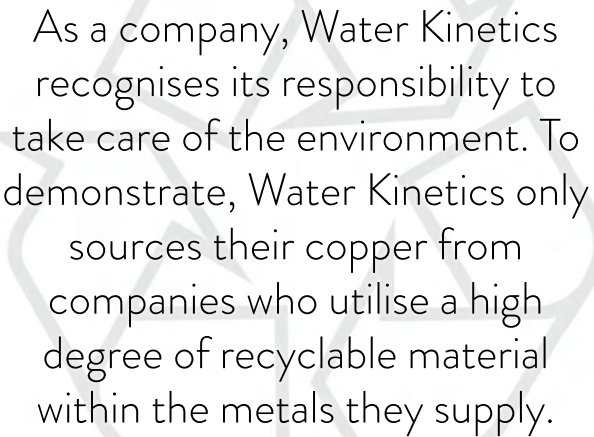
As it is a one pipe system, it is simpler and easier to install and any requirement to cut the piping once it is installed is done using the traditional methods employed by plumbers.



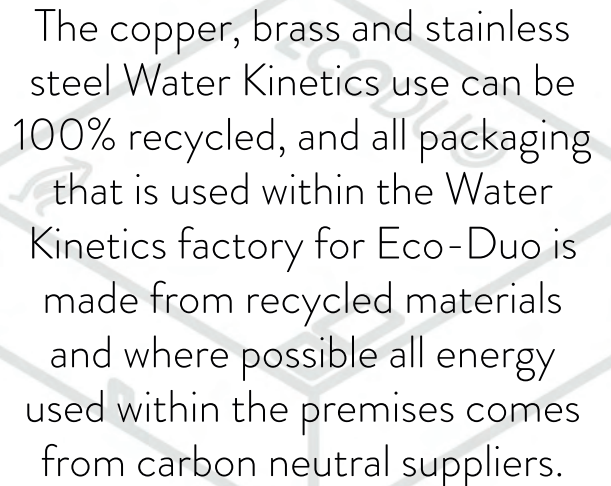
Unlike most systems, Eco-Duo brings the circulating water right up to the point of use, completely eliminating the possibility of dead legs in the system, resolving one of the main causes of water-borne pathogens within potable water systems today. This benefit, added to the stability of temperature goes a long way in the fight against water-borne pathogens including Legionella.



Sustainability



As a company, Water Kinetics recognises its responsibility to take care of the environment. To demonstrate, Water Kinetics only sources their copper from companies who utilise a high degree of recyclable material within the metals they supply.



The copper, brass and stainless steel Water Kinetics use can be 100% recycled, and all packaging that is used within the Water Kinetics factory for Eco-Duo is made from recycled materials and where possible all energy used within the premises comes from carbon neutral suppliers.



One of the greatest features of the Eco-Duo system is the energy saving achieved through its usage. It also requires half the pipework fittings, half the insulation, and half the delivery costs and therefore reduces the impact on the environment significantly in comparison to traditional copper pipe systems.

“Water Kinetics saves a high degree of energy whilst keeping temperatures constant to keep water safe”

Dr. Paul McDermott - World Infection Control Practitioner and Microbiologist



Features &



Impressive Safety

Eco-Duo is proven to reduce the risk of waterborne pathogens like Legionella and Pseudomonas Aeruginosa, keeping hot water hot and cold water cold and eliminating dead legs, protecting people who visit properties safe from infection.



Temperature Retention

Eco-Duo's unique pipe-within-a-pipe design translates into an extremely efficient system, with virtually no reduction in temperature from a heater to the outlet, saving up to 50% in energy costs.



Cuts Insulation and Pipe Fixings by 50%

With Eco-Duo's revolutionary pipe-within-a-pipe system, we've been able to reduce the materials needed for insulation, without compromising on its effectiveness.



High Quality, Low Price

In comparison to market leaders, Eco-Duo is not only more efficient, but also lower cost, in installation and ongoing expenses. With half the insulation and pipework fixings needed, we can assure you:
Eco-Duo will never be beaten on price.

& Benefits



Faster Installation and Lower Material Costs

With Eco-Duo's unique pipe-within-a pipe system, installation times, component costs, pipe-work fixings, and duct space is halved!



Reduction in Energy Costs and CO₂e

Impressive temperature retention contributes to a decrease in energy consumption, with savings reaching up to 50%. Over a projected 5 year period, Eco-Duo is forecast to save over 2.4 million tonnes of CO₂e - the equivalent to 985 million average car journeys.



Sustainability

Water Kinetics recognises its responsibility to take care of the environment. This is why we only source copper from companies which utilise a high degree of recyclable material within the metals they supply.



WRAS and KIWA

Eco-Duo is also WRAS and KIWA certified, ensuring that Eco-Duo conforms to the Water Supply regulations and is fit for use with UK plumbing systems. Full details of both certifications are available on the Water Kinetics website.

Bristol University Case Study

Installation In Four Storey Building

A four storey installation of Water Kinetics' Eco-Duo was installed in 2017 into Bristol University to monitor the energy saving potential of the pipework system. It was this installation that began to really identify the extent to which Eco-Duo saves energy. The energy consumption reduced by 50% and because there was virtually no reduction in temperature from the heater to the outlet, a previously persistent problem with Legionella within the pipework system was completely eradicated, and has never returned since.

Eco-Duo is still installed within the University and is continuing to bring the university significant cost savings and safety benefits.



BRE Study

Details of the Testing

Water Kinetics have undertaken a comprehensive study with BRE in Watford during 2019. The study focused on a comparison of a traditional potable water re-circulation system versus the Water Kinetics Eco-Duo system.

The type of pipework, fittings, pump, insulation and heater used was identical for the two tests. The results proved to be very conclusive and mirrored the ongoing testing at Bristol University. It showed that Eco-Duo does in fact save up to 50% of ongoing energy costs. It also demonstrated how effective the system is in keeping hot water hot with an outgoing water temperature of 61°C and a return temperature of 60°C.

If you would like more information on this study and the energy savings then please contact us and we can arrange for one of our representatives to contact you and present the results in more detail.



Technical Information

Water Kinetics want to make specifying Eco-Duo as simple as possible, and so have uploaded a wealth of information to their website, such as:

Installation Instructions

In order to ensure installation is as easy as possible, Water Kinetics have full installation instructions available, allowing viewers to understand how the pipework fittings connect with one another, along with QR codes on all packaging that will take plumbers to how-to videos.

BIM Files

In a world that is growing ever more technologically advanced, Water Kinetics makes sure to keep with the times, and so, Building Information Modelling (BIM) files are available upon request.

National Building Specifications (NBS) Clauses

NBS clauses are available on the Water Kinetics website for all Eco-Duo products, allowing specifiers to copy and paste the information into specifications, streamlining the process.

Data Sheets

Data Sheets are also viewable, giving a full overview of Eco-Duo products, elaborating on the dimensions available for each pipe fitting, along with features and benefits.

Flow and Pressure Charts

Flow and Pressure Charts that enable prospective specifiers the chance to measure up Eco-Duo and compare and contrast with traditional plumbing systems.

Continuing Professional Development (CPD) Courses

Water Kinetics also offers a CPD course, which covers the challenges that are faced in order to keep plumbing systems safe. The course is titled “Controlling WaterBorne Pathogens in Hot and Cold Water Systems.”

Now, more than ever it is imperative for architects, engineers, and more to understand the importance of being able to keep plumbing systems pathogen-free.

The course will help give insight in:

- The challenge of keeping systems safe.
- Common problems and issues that systems face.
- Current guidance and how it aids in managing systems correctly.
- System design and how to improve upon it moving forward.

Wras and Kiwa Certifications

Eco-Duo is also WRAS and Kiwa certified - ensuring that Eco-Duo conforms to the Water Supply regulations and is fit for use with UK plumbing systems. Full details of both certifications are available on the Water Kinetics site.



Associations

Made in Britain

Water Kinetics is also a proud member of Made In Britain, given that Eco-Duo is 100% manufactured in Great Britain, in order to deliver a reliable, dependable and local product.



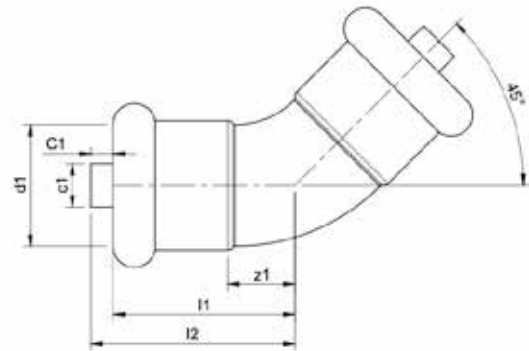
Royal Society for Public Health (RSPH)

Water Kinetics is also a member of the Royal Society for Public Health (RSPH). The aims of the RSPH also align with those of Water Kinetics. The company wishes to create healthier environments, improve and also protect the public's health, which is made possible with Eco-Duo's ability to drastically reduce levels of water-borne pathogens including Legionella.



45 Degree Elbow

ECODU©



SIZES

| | | |
|------------------------------------|----------|--------|
| Eco-Duo 45 Degree Elbow for 15mm * | W8329 CP | 0.27kg |
| Eco-Duo 45 Degree Elbow for 22mm * | W8330 CP | 0.29kg |
| Eco-Duo 45 Degree Elbow for 28mm * | W8331 CP | 0.32kg |
| Eco-Duo 45 Degree Elbow for 35mm * | W8332 CP | 0.58kg |
| Eco-Duo 45 Degree Elbow for 42mm * | W8333 CP | 0.66kg |
| Eco-Duo 45 Degree Elbow for 54mm | W1530 CP | 1.30kg |
| Eco-Duo 45 Degree Elbow for 66.7mm | W1531 CP | 1.47kg |
| Eco-Duo 45 Degree Elbow for 76.1mm | W1532 CP | 1.50kg |
| Eco-Duo 45 Degree Elbow for 108mm | W1654 CP | 2.75kg |

* Only available in packs of 10

MATERIALS

Body: Copper
Separators: 316 Stainless Steel

MAX PRESSURE

16 Bar

NOTES

Only for use with potable water
Only for use with pumped recirculated water

FEATURES AND BENEFITS

Patented Pipe-in-a-pipe technology
Saves 50% energy costs (tested by BRE)
Maintains temperatures across the whole building.
Halves installation time and costs
50% reduction in pipe fixings and insulation
No special installation required
Pipework can be cut as normal
Helps to reduce the risk of Legionella and other water borne pathogens
Can be used on hot and cold potable water systems

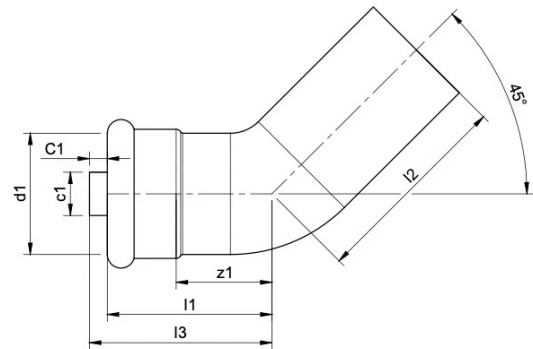
FINISHING OPTIONS

Copper CP

| SKU | DESC | l1 | l2 | d1 | z1 | c1 | C1 |
|----------|--------|-----|-----|------|----|----|----|
| W8239 CP | 15mm | 26 | 31 | 15 | 8 | 6 | 5 |
| W8330 CP | 22mm | 35 | 40 | 22 | 11 | 8 | 5 |
| W8331 CP | 28mm | 41 | 46 | 28 | 14 | 10 | 5 |
| W8332 CP | 35mm | 50 | 55 | 35 | 18 | 15 | 5 |
| W8333 CP | 42mm | 59 | 64 | 42 | 21 | 15 | 5 |
| W1530 CP | 54mm | 70 | 75 | 54 | 28 | 22 | 5 |
| W1531 CP | 66.7mm | 82 | 87 | 66.7 | 34 | 22 | 5 |
| W1532 CP | 76.1mm | 89 | 94 | 76.1 | 39 | 28 | 5 |
| W1654 CP | 108mm | 124 | 129 | 108 | 55 | 35 | 5 |

45 Degree Street Elbow

ECODU©



SIZES

| | | |
|---|----------|--------|
| Eco-Duo 45 Degree Street Elbow for 15mm * | W8334 CP | 0.34kg |
| Eco-Duo 45 Degree Street Elbow for 22mm * | W8335 CP | 0.37kg |
| Eco-Duo 45 Degree Street Elbow for 28mm * | W8336 CP | 0.40kg |
| Eco-Duo 45 Degree Street Elbow for 35mm * | W8337 CP | 0.59kg |
| Eco-Duo 45 Degree Street Elbow for 42mm * | W8338 CP | 0.66kg |
| Eco-Duo 45 Degree Street Elbow for 54mm | W1538 CP | 0.96g |
| Eco-Duo 45 Degree Street Elbow for 66.7mm | W1539 CP | 1.39kg |
| Eco-Duo 45 Degree Street Elbow for 76.1mm | W1540 CP | 1.65kg |
| Eco-Duo 45 Degree Street Elbow for 108mm | W1655 CP | 2.37kg |

* Only available in packs of 10

MATERIALS

Body: Copper
Separators: 316 Stainless Steel

MAX PRESSURE

16 Bar

NOTES

Only for use with potable water
Only for use with pumped recirculated water

FEATURES AND BENEFITS

Patented Pipe-in-a-pipe technology
Saves 50% energy costs (tested by BRE)
Maintains temperatures across the whole building.
Halves installation time and costs
50% reduction in pipe fixings and insulation
No special installation required
Pipework can be cut as normal
Helps to reduce the risk of Legionella and other water borne pathogens
Can be used on hot and cold potable water systems

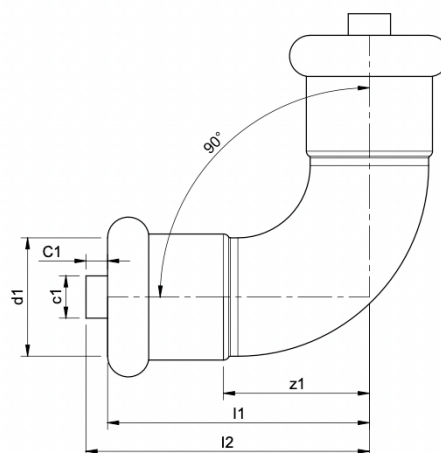
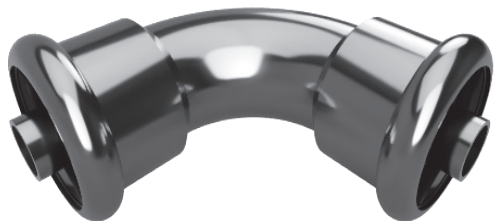
FINISHING OPTIONS

Copper CP

| SKU | DESC | I1 | I2 | I3 | d1 | z1 | c1 | C1 |
|----------|--------|-----|-----|-----|------|----|----|----|
| W8334 CP | 15mm | 26 | 34 | 39 | 15 | 8 | 6 | 5 |
| W8335 CP | 22mm | 35 | 44 | 49 | 22 | 11 | 8 | 5 |
| W8336 CP | 28mm | 41 | 49 | 54 | 28 | 15 | 5 | 5 |
| W8337 CP | 35mm | 50 | 58 | 63 | 35 | 18 | 15 | 5 |
| W8338 CP | 42mm | 59 | 74 | 79 | 42 | 21 | 15 | 5 |
| W1538 CP | 54mm | 70 | 85 | 90 | 54 | 27 | 22 | 5 |
| W1539 CP | 66.7mm | 82 | 100 | 105 | 66.7 | 34 | 22 | 5 |
| W1540 CP | 76.1mm | 88 | 105 | 110 | 76.1 | 38 | 28 | 5 |
| W1655 CP | 108mm | 125 | 145 | 150 | 108 | 55 | 35 | 5 |

90 Degree Elbow

ECODU©



SIZES

| | | |
|------------------------------------|----------|--------|
| Eco-Duo 90 Degree Elbow for 15mm * | W8319 CP | 0.27kg |
| Eco-Duo 90 Degree Elbow for 22mm * | W8320 CP | 0.35kg |
| Eco-Duo 90 Degree Elbow for 28mm * | W8321 CP | 0.38kg |
| Eco-Duo 90 Degree Elbow for 35mm * | W8322 CP | 0.62kg |
| Eco-Duo 90 Degree Elbow for 42mm * | W8323 CP | 0.70kg |
| Eco-Duo 90 Degree Elbow for 54mm | W1514 CP | 1.03kg |
| Eco-Duo 90 Degree Elbow for 66.7mm | W1515 CP | 1.48kg |
| Eco-Duo 90 Degree Elbow for 76.1mm | W1516 CP | 1.76kg |
| Eco-Duo 90 Degree Elbow for 108mm | W1650 CP | 2.40kg |

* Only available in packs of 10

MATERIALS

Body: Copper
Separators: 316 Stainless Steel

MAX PRESSURE

16 Bar

NOTES

Only for use with potable water
Only for use with pumped recirculated water

FEATURES AND BENEFITS

Patented Pipe-in-a-pipe technology
Saves 50% energy costs (tested by BRE)
Maintains temperatures across the whole building.
Halves installation time and costs
50% reduction in pipe fixings and insulation
No special installation required
Pipework can be cut as normal
Helps to reduce the risk of Legionella and other water borne pathogens
Can be used on hot and cold potable water systems

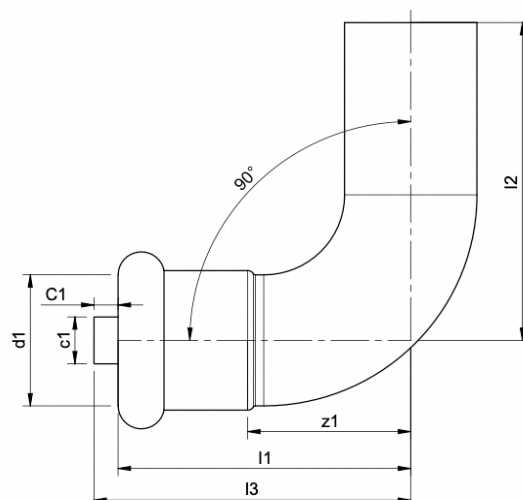
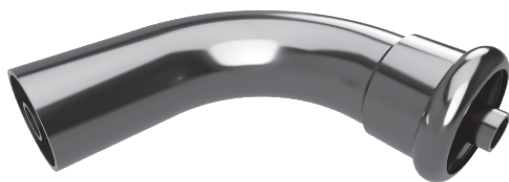
FINISHING OPTIONS

Copper CP

| SKU | DESC | l1 | l2 | d1 | z1 | c1 | C1 |
|----------|--------|-----|-----|------|-----|----|----|
| W8319 CP | 15mm | 36 | 41 | 15 | 18 | 6 | 5 |
| W8320 CP | 22mm | 50 | 55 | 22 | 27 | 8 | 5 |
| W8321 CP | 28mm | 61 | 66 | 28 | 34 | 10 | 5 |
| W8322 CP | 35mm | 75 | 80 | 35 | 43 | 15 | 5 |
| W8323 CP | 42mm | 89 | 94 | 42 | 51 | 15 | 5 |
| W1514 CP | 54mm | 108 | 113 | 54 | 65 | 22 | 5 |
| W1515 CP | 66.7mm | 129 | 134 | 66.7 | 81 | 22 | 5 |
| W1516 CP | 76.1mm | 142 | 147 | 76.1 | 92 | 28 | 5 |
| W1650 CP | 108mm | 200 | 205 | 108 | 131 | 35 | 5 |

90 Degree Street Elbow

ECODU©



SIZES

| | | |
|---|----------|--------|
| Eco-Duo 90 Degree Street Elbow for 15mm * | W8324 CP | 0.28kg |
| Eco-Duo 90 Degree Street Elbow for 22mm * | W8325 CP | 0.31kg |
| Eco-Duo 90 Degree Street Elbow for 28mm * | W8326 CP | 0.35kg |
| Eco-Duo 90 Degree Street Elbow for 35mm * | W8327 CP | 0.64kg |
| Eco-Duo 90 Degree Street Elbow for 42mm * | W8328 CP | 0.72kg |
| Eco-Duo 90 Degree Street Elbow for 54mm | W1522 CP | 1.05kg |
| Eco-Duo 90 Degree Street Elbow for 66.7mm | W1523 CP | 1.45kg |
| Eco-Duo 90 Degree Street Elbow for 76.1mm | W1524 CP | 1.77kg |
| Eco-Duo 90 Degree Street Elbow for 108mm | W1653 CP | 2.92kg |

* Only available in packs of 10

MATERIALS

Body: Copper
Separators: 316 Stainless Steel

MAX PRESSURE

16 Bar

NOTES

Only for use with potable water
Only for use with pumped recirculated water

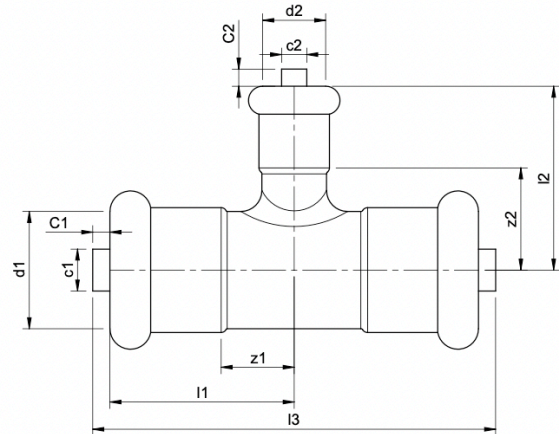
FEATURES AND BENEFITS

Patented Pipe-in-a-pipe technology
Saves 50% energy costs (tested by BRE)
Maintains temperatures across the whole building.
Halves installation time and costs
50% reduction in pipe fixings and insulation
No special installation required
Pipework can be cut as normal
Helps to reduce the risk of Legionella and other water borne pathogens
Can be used on hot and cold potable water systems

FINISHING OPTIONS

Copper CP

| SKU | DESC | l1 | l2 | l3 | d1 | z1 | c1 | C1 |
|----------|--------|-----|-----|-----|------|-----|----|----|
| W8324 CP | 15mm | 36 | 44 | 41 | 15 | 18 | 6 | 5 |
| W8325 CP | 22mm | 50 | 58 | 55 | 22 | 27 | 8 | 5 |
| W8326 CP | 28mm | 61 | 68 | 66 | 28 | 34 | 10 | 5 |
| W8327 CP | 35mm | 75 | 81 | 80 | 35 | 43 | 15 | 5 |
| W8328 CP | 42mm | 89 | 103 | 94 | 42 | 51 | 15 | 5 |
| W1522 CP | 54mm | 108 | 123 | 113 | 54 | 65 | 22 | 5 |
| W1523 CP | 66.7mm | 129 | 147 | 134 | 66.7 | 81 | 22 | 5 |
| W1524 CP | 76.1mm | 142 | 160 | 147 | 76.1 | 92 | 28 | 5 |
| W1653 CP | 108mm | 200 | 227 | 205 | 108 | 131 | 35 | 5 |



SIZES

| | | |
|---|----------|---------|
| Eco-Duo Reduced Tee Branch for 22x15x22mm * | W8355 CP | 0.36kg |
| Eco-Duo Reduced Tee Branch for 28x15x28mm * | W8356 CP | 0.41kg |
| Eco-Duo Reduced Tee Branch for 28x22x28mm * | W8357 CP | 0.42kg |
| Eco-Duo Reduced Tee Branch for 35x15x35mm * | W8358 CP | 0.67kg |
| Eco-Duo Reduced Tee Branch for 35x22x35mm * | W8359 CP | 0.67kg |
| Eco-Duo Reduced Tee Branch for 35x28x35mm * | W8360 CP | 0.70kg |
| Eco-Duo Reduced Tee Branch for 42x15x42mm * | W8361 CP | 0.73kg |
| Eco-Duo Reduced Tee Branch for 42x22x42mm * | W8362 CP | 0.65kg |
| Eco-Duo Reduced Tee Branch for 42x28x42mm * | W8363 CP | 0.84kg |
| Eco-Duo Reduced Tee Branch for 54x22x54mm | W1645 CP | 1.10kg |
| Eco-Duo Reduced Tee Branch for 54x28x54mm | W1646 CP | 1.08kg |
| Eco-Duo Reduced Tee Branch for 54x35x54mm | W1647 CP | 1.11kg |
| Eco-Duo Reduced Tee Branch for 54x42x54mm | W1648 CP | 1.22kg |
| Eco-Duo Reduced Tee Branch for 66.7x28x66.7mm | W1669 CP | 2.848kg |
| Eco-Duo Reduced Tee Branch for 66.7x35x66.7mm | W1668 CP | 2.848kg |
| Eco-Duo Reduced Tee Branch for 66.7x42x66.7mm | W1667 CP | 2.848kg |
| Eco-Duo Reduced Tee Branch for 66.7x54x66.7mm | W1666 CP | 2.848kg |
| Eco-Duo Reduced Tee Branch for 76.1x28x76.1mm | W1665 CP | 3.779kg |
| Eco-Duo Reduced Tee Branch for 76.1x35x76.1mm | W1664 CP | 3.779kg |
| Eco-Duo Reduced Tee Branch for 76.1x42x76.1mm | W1663 CP | 3.779kg |
| Eco-Duo Reduced Tee Branch for 76.1x54x76.1mm | W1662 CP | 3.779kg |
| Eco-Duo Reduced Tee Branch for 76.1x66.7x76.1mm | W1661 CP | 3.779kg |
| Eco-Duo Reduced Tee Branch for 108x54x108mm | W1594 CP | 3.05kg |
| Eco-Duo Reduced Tee Branch for 108x66.7x108mm | W1595 CP | 3.23kg |
| Eco-Duo Reduced Tee Branch for 108x76.1x108mm | W1596 CP | 3.23kg |

* Only available in packs of 10

FEATURES AND BENEFITS

- Patented Pipe-in-a-pipe technology
- Saves 50% energy costs (tested by BRE)
- Maintains temperatures across the whole building.
- Halves installation time and costs
- 50% reduction in pipe fixings and insulation
- No special installation required
- Pipework can be cut as normal
- Helps to reduce the risk of Legionella and other water borne pathogens
- Can be used on hot and cold potable water systems

MATERIALS

Body: Copper
Separators: 316 Stainless Steel

MAX PRESSURE

16 Bar

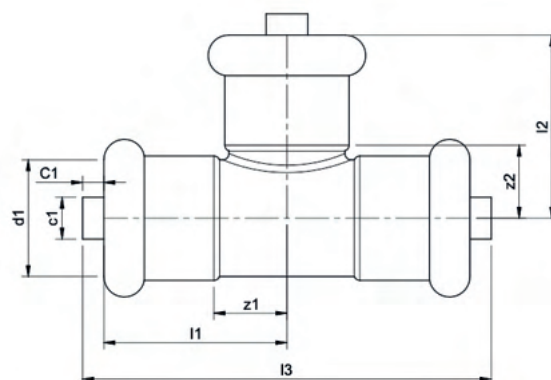
NOTES

Only for use with potable water
Only for use with pumped recirculated water

FINISHING OPTIONS

Copper CP

| SKU | DESC | I1 | I2 | I3 | d1 | d2 | z1 | z2 | c1 | C1 | c2 | C2 |
|----------|------------------|-----|-----|-----|------|------|----|----|----|----|----|----|
| W8355 CP | 22x15x22mm | 34 | 31 | 78 | 22 | 15 | 10 | 13 | 8 | 5 | 6 | 5 |
| W8356 CP | 28x15x28mm | 37 | 34 | 84 | 28 | 15 | 10 | 16 | 10 | 5 | 6 | 5 |
| W8357 CP | 28x22x28mm | 40 | 40 | 90 | 28 | 22 | 14 | 16 | 10 | 5 | 8 | 5 |
| W8358 CP | 35x15x35mm | 43 | 47 | 98 | 35 | 15 | 11 | 29 | 15 | 5 | 6 | 5 |
| W8359 CP | 35x22x35mm | 46 | 44 | 102 | 35 | 22 | 14 | 20 | 15 | 5 | 8 | 5 |
| W8360 CP | 35x28x35mm | 49 | 47 | 108 | 35 | 28 | 17 | 21 | 15 | 5 | 10 | 5 |
| W8361 CP | 42x15x42mm | 49 | 52 | 108 | 42 | 15 | 11 | 34 | 15 | 5 | 6 | 5 |
| W8362 CP | 42x22x42mm | 53 | 48 | 108 | 42 | 22 | 15 | 24 | 15 | 5 | 8 | 5 |
| W8363 CP | 42x28x42mm | 56 | 52 | 116 | 42 | 28 | 18 | 25 | 15 | 5 | 10 | 5 |
| W1645 CP | 54x22x54mm | 57 | 65 | 124 | 54 | 22 | 15 | 41 | 22 | 5 | 8 | 5 |
| W1646 CP | 54x28x54mm | 60 | 68 | 130 | 54 | 28 | 18 | 41 | 22 | 5 | 10 | 5 |
| W1647 CP | 54x35x54mm | 64 | 69 | 138 | 54 | 35 | 21 | 41 | 22 | 5 | 15 | 5 |
| W1648 CP | 54x42x54mm | 67 | 73 | 144 | 54 | 42 | 25 | 41 | 22 | 5 | 15 | 5 |
| W1669 CP | 66.7x28x66.7mm | 70 | 76 | 150 | 66.7 | 28 | 22 | 49 | 22 | 5 | 10 | 5 |
| W1668 CP | 66.7x35x66.7mm | 75 | 81 | 160 | 66.7 | 35 | 27 | 49 | 22 | 5 | 15 | 5 |
| W1667 CP | 66.7x42x66.7mm | 78 | 87 | 166 | 66.7 | 42 | 30 | 49 | 22 | 5 | 15 | 5 |
| W1666 CP | 66.7x54x66.7mm | 83 | 92 | 176 | 66.7 | 54 | 35 | 49 | 22 | 5 | 22 | 5 |
| W1665 CP | 76.1x28x76.1mm | 76 | 87 | 162 | 76.1 | 28 | 27 | 60 | 28 | 5 | 10 | 5 |
| W1664 CP | 76.1x35x76.1mm | 76 | 86 | 162 | 76.1 | 35 | 27 | 54 | 28 | 5 | 15 | 5 |
| W1663 CP | 76.1x42x76.1mm | 80 | 92 | 170 | 76.1 | 42 | 30 | 54 | 28 | 5 | 15 | 5 |
| W1662 CP | 76.1x54x76.1mm | 86 | 97 | 182 | 76.1 | 54 | 36 | 54 | 28 | 5 | 22 | 5 |
| W1661 CP | 76.1x66.7x76.1mm | 91 | 105 | 192 | 76.1 | 66.7 | 41 | 57 | 28 | 5 | 22 | 5 |
| W1594 CP | 108x54x108mm | 108 | 115 | 226 | 108 | 54 | 38 | 75 | 35 | 5 | 22 | 5 |
| W1595 CP | 108x66.7x108mm | 112 | 123 | 236 | 108 | 66.7 | 43 | 75 | 35 | 5 | 22 | 5 |
| W1596 CP | 108x76.1x108mm | 119 | 125 | 248 | 108 | 76.1 | 49 | 75 | 35 | 5 | 22 | 5 |



SIZES

| | | |
|------------------------------|----------|---------|
| Eco-Duo Equal Tee for 15mm * | W8364 CP | 0.510kg |
| Eco-Duo Equal Tee for 22mm * | W8365 CP | 0.761kg |
| Eco-Duo Equal Tee for 28mm * | W8366 CP | 0.912kg |
| Eco-Duo Equal Tee for 35mm * | W8367 CP | 1.584kg |
| Eco-Duo Equal Tee for 42mm * | W8368 CP | 1.819kg |
| Eco-Duo Equal Tee for 54mm | W1546 CP | 2.422kg |
| Eco-Duo Equal Tee for 66.7mm | W1547 CP | 2.848kg |
| Eco-Duo Equal Tee for 76.1mm | W1548 CP | 3.779kg |
| Eco-Duo Equal Tee for 108mm | W1656 CP | 5.601kg |

* Only available in packs of 10

MATERIALS

Body: Copper
Separators: 316 Stainless Steel

MAX PRESSURE

16 Bar

NOTES

Only for use with potable water
Only for use with pumped recirculated water

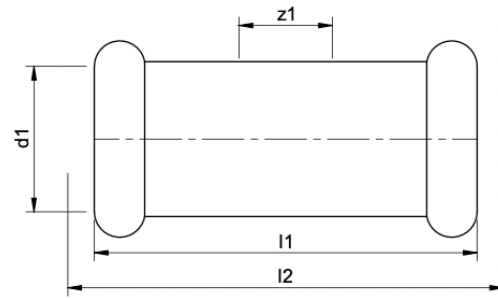
FEATURES AND BENEFITS

Patented Pipe-in-a-pipe technology
Saves 50% energy costs (tested by BRE)
Maintains temperatures across the whole building.
Halves installation time and costs
50% reduction in pipe fixings and insulation
No special installation required
Pipework can be cut as normal
Helps to reduce the risk of Legionella and other water borne pathogens
Can be used on hot and cold potable water systems

FINISHING OPTIONS

Copper CP

| SKU | DESC | I1 | I2 | I3 | d1 | z1 | z2 | c1 | C1 |
|----------|--------|-----|-----|-----|------|----|-------|----|----|
| W8364 CP | 15mm | 34 | 28 | 79 | 15 | 16 | 7.5 | 6 | 5 |
| W8365 CP | 22mm | 39 | 37 | 91 | 22 | 15 | 11 | 8 | 5 |
| W8366 CP | 28mm | 43 | 43 | 98 | 28 | 17 | 14 | 10 | 5 |
| W8367 CP | 35mm | 53 | 53 | 116 | 35 | 21 | 17.5 | 15 | 5 |
| W8368 CP | 42mm | 63 | 63 | 136 | 42 | 25 | 21 | 15 | 5 |
| W1546 CP | 54mm | 73 | 73 | 159 | 54 | 31 | 27 | 22 | 5 |
| W1547 CP | 66.7mm | 89 | 100 | 188 | 66.7 | 41 | 33.35 | 22 | 5 |
| W1548 CP | 76.1mm | 97 | 106 | 204 | 76.1 | 47 | 38.05 | 28 | 5 |
| W1656 CP | 108mm | 135 | 145 | 280 | 108 | 65 | 54 | 35 | 5 |



SIZES

| | | |
|--|----------|--------|
| Eco-Duo Press Slip Coupling for 15mm * | W8339 CP | 0.05kg |
| Eco-Duo Press Slip Coupling for 22mm * | W8340 CP | 0.08kg |
| Eco-Duo Press Slip Coupling for 28mm * | W8341 CP | 0.11kg |
| Eco-Duo Press Slip Coupling for 35mm * | W8342 CP | 0.15kg |
| Eco-Duo Press Slip Coupling for 42mm * | W8343 CP | 0.22kg |
| Eco-Duo Press Slip Coupling for 54mm | W1589 CP | 0.32kg |
| Eco-Duo Press Slip Coupling for 66.7mm | W1590 CP | 0.44kg |
| Eco-Duo Press Slip Coupling for 76.1mm | W1591 CP | 0.59kg |
| Eco-Duo Press Slip Coupling for 108mm | W1659 CP | 1.12kg |

* Only available in packs of 10

MATERIALS

Body: Copper
Separators: 316 Stainless Steel

MAX PRESSURE

16 Bar

NOTES

Only for use with potable water
Only for use with pumped recirculated water

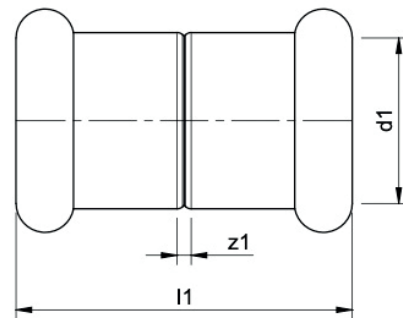
FEATURES AND BENEFITS

Patented Pipe-in-a-pipe technology
Saves 50% energy costs (tested by BRE)
Maintains temperatures across the whole building.
Halves installation time and costs
50% reduction in pipe fixings and insulation
No special installation required
Pipework can be cut as normal
Helps to reduce the risk of Legionella and other water borne pathogens
Can be used on hot and cold potable water systems

FINISHING OPTIONS

Copper CP

| SKU | DESC | l1 | l2 | d1 | z1 |
|----------|--------|-----|-----|------|----|
| W8339 CP | 15mm | 47 | 57 | 15 | 11 |
| W8340 CP | 22mm | 64 | 74 | 22 | 16 |
| W8341 CP | 28mm | 72 | 82 | 28 | 18 |
| W8342 CP | 35mm | 88 | 98 | 35 | 24 |
| W8343 CP | 42mm | 104 | 114 | 42 | 28 |
| W1589 CP | 54mm | 119 | 129 | 54 | 33 |
| W1590 CP | 66.7mm | 112 | 122 | 66.7 | 16 |
| W1591 CP | 76.1mm | 119 | 126 | 76.1 | 16 |
| W1659 CP | 108mm | 153 | 163 | 108 | 16 |



SIZES

| | | |
|--------------------------------------|----------|--------|
| Eco-Duo Straight Coupling for 15mm * | W8369 CP | 0.03kg |
| Eco-Duo Straight Coupling for 22mm * | W8370 CP | 0.05kg |
| Eco-Duo Straight Coupling for 28mm * | W8371 CP | 0.06kg |
| Eco-Duo Straight Coupling for 35mm * | W8372 CP | 0.09kg |
| Eco-Duo Straight Coupling for 42mm * | W8373 CP | 0.13kg |
| Eco-Duo Straight Coupling for 54mm | W1572 CP | 0.19kg |
| Eco-Duo Straight Coupling for 66.7mm | W1573 CP | 0.44kg |
| Eco-Duo Straight Coupling for 76.1mm | W1574 CP | 0.19kg |
| Eco-Duo Straight Coupling for 108mm | W1657 CP | 1.26kg |

* Only available in packs of 10

FEATURES AND BENEFITS

Patented Pipe-in-a-pipe technology
 Saves 50% energy costs (tested by BRE)
 Maintains temperatures across the whole building.
 Halves installation time and costs
 50% reduction in pipe fixings and insulation
 No special installation required
 Pipework can be cut as normal
 Helps to reduce the risk of Legionella and other water borne pathogens
 Can be used on hot and cold potable water systems

MATERIALS

Body: Copper
 Separators: 316 Stainless Steel

MAX PRESSURE

16 Bar

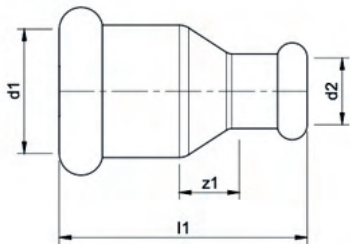
NOTES

Only for use with potable water
 Only for use with pumped recirculated water

FINISHING OPTIONS

Copper CP

| SKU | DESC | l1 | d1 | z1 |
|----------|--------|-----|------|----|
| W8369 CP | 15mm | 38 | 15 | 2 |
| W8370 CP | 22mm | 49 | 22 | 2 |
| W8371 CP | 28mm | 55 | 28 | 2 |
| W8372 CP | 35mm | 66 | 35 | 2 |
| W8373 CP | 42mm | 79 | 42 | 3 |
| W1572 CP | 54mm | 66 | 54 | 3 |
| W1573 CP | 66.7mm | 113 | 66.7 | 17 |
| W1574 CP | 76.1mm | 117 | 76.1 | 17 |
| W1657 CP | 108mm | 156 | 108 | 17 |



SIZES

| | | |
|--|----------|--------|
| Eco-Duo Coupling Reducer for 22mm x 15mm * | W8350 CP | 0.05kg |
| Eco-Duo Coupling Reducer for 28mm x 22mm * | W8351 CP | 0.07kg |
| Eco-Duo Coupling Reducer for 28mm x 15mm * | W8352 CP | 0.07kg |
| Eco-Duo Coupling Reducer for 35mm x 28mm * | W8353 CP | 0.09kg |
| Eco-Duo Coupling Reducer for 42mm x 35mm * | W8354 CP | 0.14kg |
| Eco-Duo Coupling Reducer for 54mm x 42mm | W1652 CP | 0.21kg |

* Only available in packs of 10

FEATURES AND BENEFITS

- Patented Pipe-in-a-pipe technology
- Saves 50% energy costs (tested by BRE)
- Maintains temperatures across the whole building.
- Halves installation time and costs
- 50% reduction in pipe fixings and insulation
- No special installation required
- Pipework can be cut as normal
- Helps to reduce the risk of Legionella and other water borne pathogens
- Can be used on hot and cold potable water systems

MATERIALS

- Body: Copper
- Separators: 316 Stainless Steel

MAX PRESSURE

16 Bar

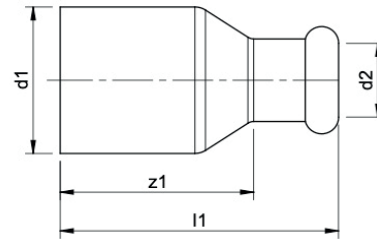
NOTES

- Only for use with potable water
- Only for use with pumped recirculated water

FINISHING OPTIONS

- Copper CP

| SKU | DESC | l1 | d1 | d2 | z1 |
|----------|---------|----|----|----|----|
| W8350 CP | 22x15mm | 48 | 22 | 15 | 3 |
| W8351 CP | 28x22mm | 56 | 28 | 22 | 6 |
| W8352 CP | 28x15mm | 54 | 28 | 15 | 10 |
| W8353 CP | 35x28mm | 65 | 35 | 28 | 7 |
| W8354 CP | 42x35mm | 77 | 42 | 35 | 7 |
| W1652 CP | 54x42mm | 90 | 54 | 42 | 9 |



SIZES

Eco-Duo Coupling Street Reducer for 28mm x 22mm *

Eco-Duo Coupling Street Reducer for 35mm x 22mm *

Eco-Duo Coupling Street Reducer for 35mm x 28mm *

Eco-Duo Coupling Street Reducer for 42mm x 22mm *

Eco-Duo Coupling Street Reducer for 42mm x 28mm *

Eco-Duo Coupling Street Reducer for 42mm x 35mm *

Eco-Duo Coupling Street Reducer for 54mm x 35mm

Eco-Duo Coupling Street Reducer for 54mm x 42mm

Eco-Duo Coupling Street Reducer for 66.7mm x 28mm

Eco-Duo Coupling Street Reducer for 66.7mm x 35mm

Eco-Duo Coupling Street Reducer for 66.7mm x 42mm

Eco-Duo Coupling Street Reducer for 66.7mm x 54mm

Eco-Duo Coupling Street Reducer for 76.1mm x 35mm

Eco-Duo Coupling Street Reducer for 76.1mm x 42mm

Eco-Duo Coupling Street Reducer for 76.1mm x 54mm

Eco-Duo Coupling Street Reducer for 76.1mm x 66.7mm

Eco-Duo Coupling Street Reducer for 108mm x 42mm

Eco-Duo Coupling Street Reducer for 108mm x 54mm

Eco-Duo Coupling Street Reducer for 108mm x 66.7mm

Eco-Duo Coupling Street Reducer for 108mm x 76.1mm

* Only available in packs of 10

| | |
|----------|--------|
| W8344 CP | 0.05kg |
| W8345 CP | 0.07kg |
| W8346 CP | 0.09kg |
| W8347 CP | 0.11kg |
| W8348 CP | 0.12kg |
| W8349 CP | 0.12kg |
| W1557 CP | 0.16kg |
| W1558 CP | 0.19kg |
| W1559 CP | 0.97kg |
| W1560 CP | 0.97kg |
| W1561 CP | 0.97kg |
| W1562 CP | 1.99kg |
| W1563 CP | 1.07kg |
| W1564 CP | 1.07kg |
| W1565 CP | 1.08kg |
| W1566 CP | 1.16kg |
| W8386 CP | 0.93kg |
| W8387 CP | 0.94kg |
| W8389 CP | 1.05kg |
| W8390 CP | 1.10kg |

MATERIALS

Body: Copper
Separators: 316 Stainless Steel

MAX PRESSURE

16 Bar

NOTES

Only for use with potable water
Only for use with pumped recirculated water

FINISHING OPTIONS

Copper CP

FEATURES AND BENEFITS

Patented Pipe-in-a-pipe technology
Saves 50% energy costs (tested by BRE)
Maintains temperatures across the whole building.
Halves installation time and costs
50% reduction in pipe fixings and insulation
No special installation required
Pipework can be cut as normal
Helps to reduce the risk of Legionella and other water borne pathogens
Can be used on hot and cold potable water systems

| SKU | DESC | l1 | D1 | d2 | z1 |
|----------|-------------|-----|------|------|-----|
| W8344 CP | 28-22mm | 57 | 28 | 15 | 39 |
| W8345 CP | 35-22mm | 68 | 35 | 22 | 44 |
| W8346 CP | 35-28mm | 67 | 35 | 28 | 40 |
| W8347 CP | 42-22mm | 77 | 42 | 22 | 54 |
| W8348 CP | 42-28mm | 78 | 42 | 28 | 51 |
| W8349 CP | 42-35mm | 90 | 42 | 35 | 46 |
| W1557 CP | 54-35mm | 91 | 54 | 35 | 58 |
| W1558 CP | 54-42mm | 91 | 54 | 42 | 53 |
| W1559 CP | 66.7-28mm | 125 | 66.7 | 28 | 98 |
| W1560 CP | 66.7-35mm | 126 | 66.7 | 35 | 94 |
| W1561 CP | 66.7-42mm | 129 | 66.7 | 42 | 91 |
| W1562 CP | 66.7-54mm | 128 | 66.7 | 54 | 85 |
| W1563 CP | 76.1-35mm | 131 | 76.1 | 35 | 99 |
| W1564 CP | 76.1-42mm | 134 | 76.1 | 42 | 96 |
| W1565 CP | 76.1-54mm | 133 | 76.1 | 54 | 90 |
| W1566 CP | 76.1-66.7mm | 130 | 76.1 | 66.7 | 81 |
| W8386 CP | 108-42mm | 180 | 108 | 42 | 142 |
| W8387 CP | 108-54mm | 179 | 108 | 54 | 136 |
| W8389 CP | 108-66.7mm | 178 | 108 | 66.7 | 129 |
| W8390 CP | 108-76.1mm | 174 | 108 | 76.1 | 124 |



SIZES

| | | |
|--------------------------------|----------|---------|
| Eco-Duo 3m Pipework for 15mm | W1501 CP | 0.510kg |
| Eco-Duo 3m Pipework for 22mm | W1502 CP | 0.761kg |
| Eco-Duo 3m Pipework for 28mm | W1503 CP | 0.912kg |
| Eco-Duo 3m Pipework for 35mm | W1504 CP | 1.584kg |
| Eco-Duo 3m Pipework for 42mm | W1505 CP | 1.819kg |
| Eco-Duo 3m Pipework for 54mm | W1506 CP | 2.422kg |
| Eco-Duo 3m Pipework for 66.7mm | W1507 CP | 2.848kg |
| Eco-Duo 3m Pipework for 76.1mm | W1508 CP | 3.779kg |
| Eco-Duo 3m Pipework for 108mm | W8697 CP | 5.601kg |

FEATURES AND BENEFITS

Patented Pipe-in-a-pipe technology
Saves 50% energy costs (tested by BRE)
Maintains temperatures across the whole building.
Halves installation time and costs
50% reduction in pipe fixings and insulation
No special installation required
Pipework can be cut as normal
Helps to reduce the risk of Legionella and other water borne pathogens
Can be used on hot and cold potable water systems

MATERIALS

Copper Tube to BS EN 1057 - R250/
R290
15mm - 54mm = Half Hard
66.7 - 108mm = Hard
Spirals - 316 Stainless Steel

MAX PRESSURE

16 Bar

NOTES

Only for use with potable water
Only for use with pumped recirculated water

FINISHING OPTIONS

Copper CP



SIZES

| | | |
|--|----------|-------|
| Eco-Duo 15mm Pipe Spiral (Pack of 20) | W8425 SS | 0.4kg |
| Eco-Duo 22mm Pipe Spiral (Pack of 20) | W8426 SS | 0.8kg |
| Eco-Duo 28mm Pipe Spiral (Pack of 20) | W8428 SS | 1.2kg |
| Eco-Duo 35mm Pipe Spiral (Pack of 20) | W8429 SS | 2.0kg |
| Eco-Duo 42mm Pipe Spiral (Pack of 20) | W8430 SS | 2.4kg |
| Eco-Duo 54mm Pipe Spiral (Pack of 20) | W8431 SS | 2.8kg |
| Eco-Duo 66.7mm Pipe Spiral (Pack of 2) | W8432 SS | 3.2kg |
| Eco-Duo 76.1mm Pipe Spiral (Pack of 2) | W8433 SS | 3.6kg |
| Eco-Duo 108mm Pipe Spiral (Pack of 2) | W8434 SS | 3.8kg |

FEATURES AND BENEFITS

- Patented Pipe-in-a-pipe technology
- Saves 50% energy costs (tested by BRE)
- Maintains temperatures across the whole building.
- Halves installation time and costs
- 50% reduction in pipe fixings and insulation
- No special installation required
- Pipework can be cut as normal
- Helps to reduce the risk of Legionella and other water borne pathogens
- Can be used on hot and cold potable water systems

MATERIALS

316 Stainless Steel

MAX PRESSURE

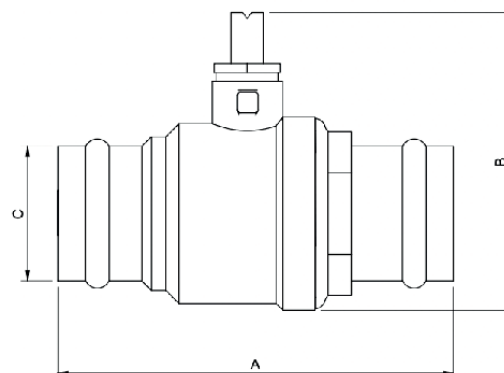
16 Bar

NOTES

Only for use with potable water
Only for use with pumped recirculated water

FINISHING OPTIONS

Stainless Steel SS



SIZES

| | |
|--|----------|
| Eco-Duo Commissioning Fitting for 22mm | W1605 BR |
| Eco-Duo Commissioning Fitting for 28mm | W1606 BR |
| Eco-Duo Commissioning Fitting for 35mm | W1607 BR |
| Eco-Duo Commissioning Fitting for 42mm | W1608 BR |

| |
|--------|
| 0.45kg |
| 0.69kg |
| 0.89kg |
| 1.62kg |

MATERIALS

Body: Brass
Separators: 316 Stainless Steel

MAX PRESSURE

16 Bar

FEATURES AND BENEFITS

Patented Pipe-in-a-pipe technology
Saves 50% energy costs (tested by BRE)
Maintains temperatures across the whole building.
Halves installation time and costs
50% reduction in pipe fixings and insulation
No special installation required
Pipework can be cut as normal
Helps to reduce the risk of Legionella and other water borne pathogens
Can be used on hot and cold potable water systems

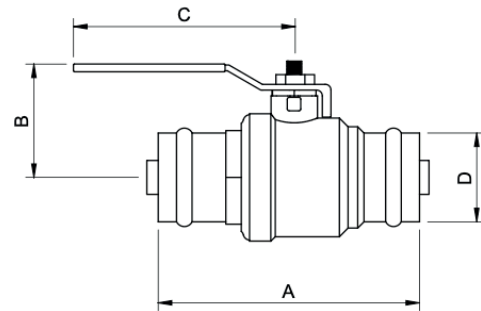
NOTES

Only for use with potable water
Only for use with pumped recirculated water

FINISHING OPTIONS

Brass BR

| SKU | DESC | A | B | C |
|----------|------|-----|-----|----|
| W1605 BR | 22mm | 101 | 70 | 22 |
| W1606 BR | 28mm | 116 | 78 | 28 |
| W1607 BR | 35mm | 136 | 82 | 35 |
| W1608 BR | 42mm | 150 | 102 | 42 |



SIZES

| | | |
|---|----------|--------|
| Eco-Duo Continuous Isolation Valve for 15mm | W1599 BL | 0.30kg |
| Eco-Duo Continuous Isolation Valve for 22mm | W1600 BL | 0.40kg |
| Eco-Duo Continuous Isolation Valve for 28mm | W1601 BL | 0.70kg |
| Eco-Duo Continuous Isolation Valve for 35mm | W1602 BL | 0.90kg |
| Eco-Duo Continuous Isolation Valve for 42mm | W1603 BL | 1.10kg |
| Eco-Duo Continuous Isolation Valve for 54mm | W1604 BL | 1.80kg |

MATERIALS

Main Body: Brass
Pipes: Copper
Separators: 316 Stainless Steel

MAX PRESSURE

16 Bar up to 30°C

FEATURES AND BENEFITS

Patented Pipe-in-a-pipe technology
Saves 50% energy costs (tested by BRE)
Maintains temperatures across the whole building.
Halves installation time and costs
50% reduction in pipe fixings and insulation
No special installation required
Pipework can be cut as normal
Helps to reduce the risk of Legionella and other water borne pathogens
Can be used on hot and cold potable water systems

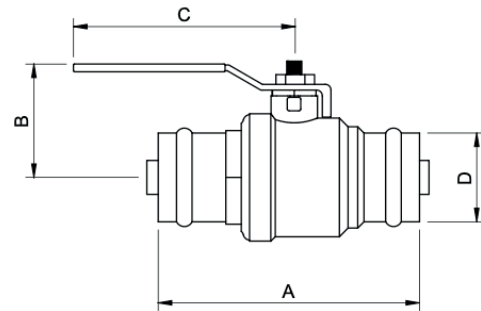
NOTES

Only for use with potable water
Only for use with pumped recirculated water

FINISHING OPTIONS

Copper CP

| SKU | DESC | A | B | C | D |
|----------|------|-----|----|-----|----|
| W1599 BL | 15mm | 78 | 46 | 90 | 15 |
| W1600 BL | 22mm | 85 | 54 | 95 | 22 |
| W1601 BL | 28mm | 100 | 57 | 110 | 28 |
| W1602 BL | 35mm | 120 | 62 | 110 | 35 |
| W1603 BL | 42mm | 135 | 77 | 140 | 42 |
| W1604 BL | 54mm | 160 | 84 | 140 | 54 |



SIZES

| | | |
|---|----------|--------|
| Eco-Duo Continuous Isolation Valve for 15mm | W1599 RD | 0.30kg |
| Eco-Duo Continuous Isolation Valve for 22mm | W1600 RD | 0.40kg |
| Eco-Duo Continuous Isolation Valve for 28mm | W1601 RD | 0.70kg |
| Eco-Duo Continuous Isolation Valve for 35mm | W1602 RD | 0.90kg |
| Eco-Duo Continuous Isolation Valve for 42mm | W1603 RD | 1.10kg |
| Eco-Duo Continuous Isolation Valve for 54mm | W1604 RD | 1.80kg |

MATERIALS

Main Body: Brass
Pipes: Copper
Separators: 316 Stainless Steel

MAX PRESSURE

16 Bar up to 30°C

FEATURES AND BENEFITS

- Patented Pipe-in-a-pipe technology
- Saves 50% energy costs (tested by BRE)
- Maintains temperatures across the whole building.
- Halves installation time and costs
- 50% reduction in pipe fixings and insulation
- No special installation required
- Pipework can be cut as normal
- Helps to reduce the risk of Legionella and other water borne pathogens
- Can be used on hot and cold potable water systems

NOTES

Only for use with potable water
Only for use with pumped recirculated water

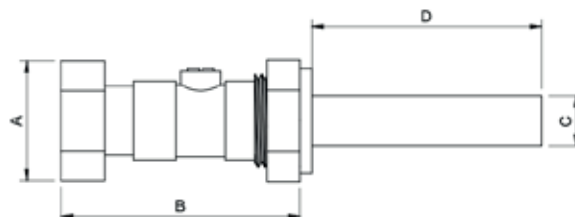
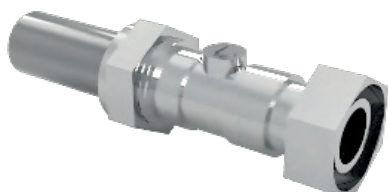
FINISHING OPTIONS

Copper CP

| SKU | DESC | A | B | C | D |
|----------|------|-----|----|-----|----|
| W1599 RD | 15mm | 78 | 46 | 90 | 15 |
| W1600 RD | 22mm | 85 | 54 | 95 | 22 |
| W1601 RD | 28mm | 100 | 57 | 110 | 28 |
| W1602 RD | 35mm | 120 | 62 | 110 | 35 |
| W1603 RD | 42mm | 135 | 77 | 140 | 42 |
| W1604 RD | 54mm | 160 | 84 | 140 | 54 |

1/2 " BSP Tap Connector Female - 15mm

ECODU©



SIZES

Eco-Duo 1/2 " BSP Tap Connector Female 70mm W1597 CP
Eco-Duo 1/2 "BSP Tap Connector Female 90mm W1598 CP
Eco-Duo 1/2 " BSP Tap Connector Female 100mm W1617 CP
Eco-Duo 1/2 " BSP Tap Connector Female 130mm W1618 CP
Eco-Duo 1/2 " BSP Tap Connector Female 150mm W1619 CP

0.10kg
0.10kg
0.10kg
0.10kg
0.10kg

MATERIALS

Main Body: Chrome Plated Brass
Pipes: Copper
Separators: 316 Stainless Steel

MAX PRESSURE

16 Bar up to 30°C

FEATURES AND BENEFITS

Patented Pipe-in-a-pipe technology
Saves 50% energy costs (tested by BRE)
Maintains temperatures across the whole building.
Halves installation time and costs
50% reduction in pipe fixings and insulation
No special installation required
Pipework can be cut as normal
Helps to reduce the risk of Legionella and other water borne pathogens
Can be used on hot and cold potable water systems

NOTES

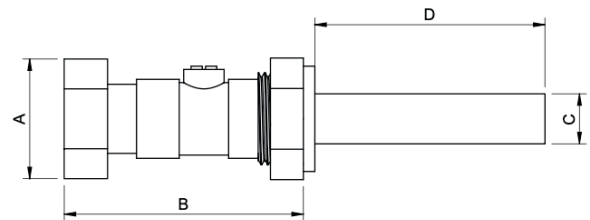
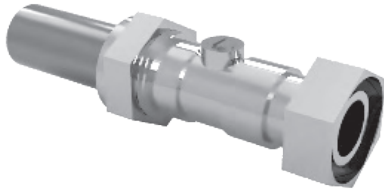
Only for use with potable water
Only for use with pumped recirculated water

FINISHING OPTIONS

Copper CP

| SKU | DESC | A | B | C | D |
|----------|-------|----|----|----|-----|
| W1597 CP | 70mm | 25 | 60 | 15 | 70 |
| W1598 CP | 90mm | 25 | 60 | 15 | 90 |
| W1617 CP | 100mm | 25 | 60 | 15 | 100 |
| W1618 CP | 130mm | 25 | 60 | 15 | 130 |
| W1619 CP | 150mm | 25 | 60 | 15 | 150 |

3/4 " BSP Tap Connector Female - 22mm



SIZES

| | | |
|--|----------|--------|
| Eco-Duo 3/4 " BSP Tap Connector Female 70mm | W1620 CP | 0.30kg |
| Eco-Duo 3/4 " BSP Tap Connector Female 90mm | W1621 CP | 0.30kg |
| Eco-Duo 3/4 " BSP Tap Connector Female 100mm | W1622 CP | 0.30kg |
| Eco-Duo 3/4 " BSP Tap Connector Female 130mm | W1623 CP | 0.30kg |
| Eco-Duo 3/4 " BSP Tap Connector Female 150mm | W1624 CP | 0.30kg |

MATERIALS

Main Body: Chrome Plated Brass
Pipes: Copper
Separators: 316 Stainless Steel

MAX PRESSURE

16 Bar up to 30°C

FEATURES AND BENEFITS

Patented Pipe-in-a-pipe technology
Saves 50% energy costs (tested by BRE)
Maintains temperatures across the whole building.
Halves installation time and costs
50% reduction in pipe fixings and insulation
No special installation required
Pipework can be cut as normal
Helps to reduce the risk of Legionella and other water borne pathogens
Can be used on hot and cold potable water systems

NOTES

Only for use with potable water
Only for use with pumped recirculated water

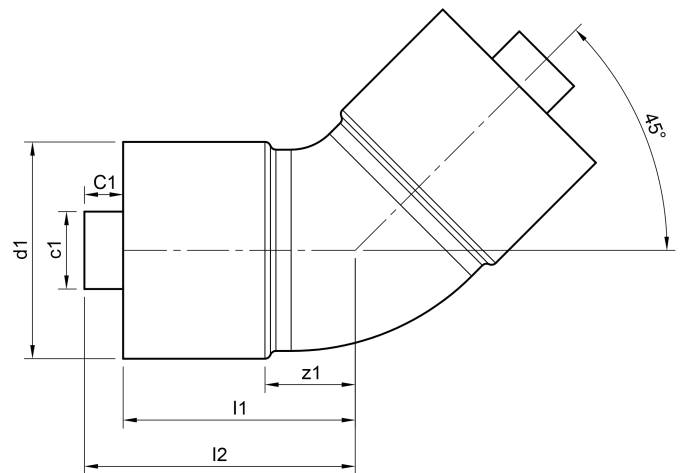
FINISHING OPTIONS

Copper CP

| SKU | DESC | A | B | C | D |
|----------|-------|----|----|----|-----|
| W1620 CP | 70mm | 35 | 75 | 22 | 70 |
| W1621 CP | 90mm | 35 | 75 | 22 | 90 |
| W1622 CP | 100mm | 35 | 75 | 22 | 100 |
| W1623 CP | 130mm | 35 | 75 | 22 | 130 |
| W1624 CP | 150mm | 35 | 75 | 22 | 150 |

45 Degree Elbow - Solder

ECODU©



SIZES

| | | |
|------------------------------------|----------|--------|
| Eco-Duo 45 Degree Elbow for 15mm * | W8329 CS | 0.27kg |
| Eco-Duo 45 Degree Elbow for 22mm * | W8330 CS | 0.29kg |
| Eco-Duo 45 Degree Elbow for 28mm * | W8331 CS | 0.32kg |
| Eco-Duo 45 Degree Elbow for 35mm * | W8332 CS | 0.58kg |
| Eco-Duo 45 Degree Elbow for 42mm * | W8333 CS | 0.66kg |
| Eco-Duo 45 Degree Elbow for 54mm | W1530 CS | 1.30kg |
| Eco-Duo 45 Degree Elbow for 66.7mm | W1531 CS | 1.47kg |
| Eco-Duo 45 Degree Elbow for 76.1mm | W1532 CS | 1.50kg |
| Eco-Duo 45 Degree Elbow for 108mm | W1654 CS | 2.75kg |

* Only available in packs of 10

MATERIALS

Body: Copper
Separators: 316 Stainless Steel

MAX PRESSURE

16 Bar

NOTES

Only for use with potable water
Only for use with pumped recirculated water

FEATURES AND BENEFITS

Patented Pipe-in-a-pipe technology
Saves 50% energy costs (tested by BRE)
Maintains temperatures across the whole building.
Halves installation time and costs
50% reduction in pipe fixings and insulation
No special installation required
Pipework can be cut as normal
Helps to reduce the risk of Legionella and other water borne pathogens
Can be used on hot and cold potable water systems

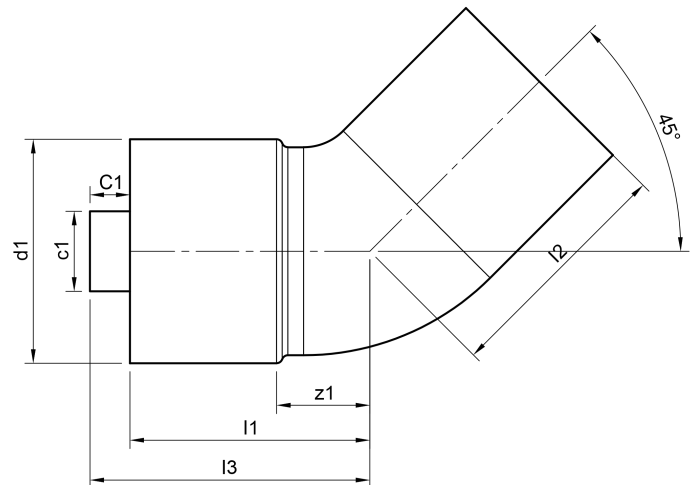
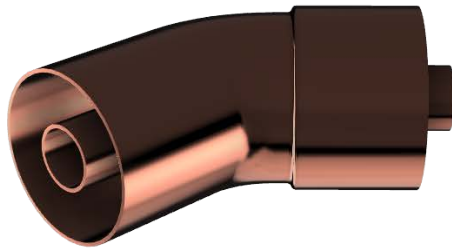
FINISHING OPTIONS

Copper CS

| SKU | DESC | l1 | l2 | d1 | z1 | c1 | C1 |
|----------|--------|-----|-----|------|----|----|----|
| W8329 CS | 15mm | 18 | 23 | 15 | 6 | 6 | 5 |
| W8330 CS | 22mm | 26 | 31 | 22 | 9 | 8 | 5 |
| W8331 CS | 28mm | 30 | 35 | 28 | 11 | 10 | 5 |
| W8332 CS | 35mm | 39 | 44 | 35 | 15 | 15 | 5 |
| W8333 CS | 42mm | 44 | 49 | 42 | 16 | 15 | 5 |
| W1530 CS | 54mm | 54 | 59 | 54 | 21 | 22 | 5 |
| W1531 CS | 66.7mm | 69 | 74 | 66.7 | 34 | 22 | 5 |
| W1532 CS | 76.1mm | 74 | 79 | 76.1 | 39 | 28 | 5 |
| W1654 CS | 108mm | 112 | 117 | 108 | 61 | 35 | 5 |

45 Degree Street Elbow - Solder

ECODU©



SIZES

| | | |
|---|----------|--------|
| Eco-Duo 45 Degree Street Elbow for 15mm * | W8334 CS | 0.34kg |
| Eco-Duo 45 Degree Street Elbow for 22mm * | W8335 CS | 0.37kg |
| Eco-Duo 45 Degree Street Elbow for 28mm * | W8336 CS | 0.40kg |
| Eco-Duo 45 Degree Street Elbow for 35mm * | W8337 CS | 0.59kg |
| Eco-Duo 45 Degree Street Elbow for 42mm * | W8338 CS | 0.66kg |
| Eco-Duo 45 Degree Street Elbow for 54mm | W1538 CS | 0.96g |
| Eco-Duo 45 Degree Street Elbow for 76.1mm | W1540 CS | 1.65kg |
| Eco-Duo 45 Degree Street Elbow for 108mm | W1655 CS | 2.37kg |

* Only available in packs of 10

MATERIALS

Body: Copper
Separators: 316 Stainless Steel

MAX PRESSURE

16 Bar

NOTES

Only for use with potable water
Only for use with pumped recirculated water

FEATURES AND BENEFITS

Patented Pipe-in-a-pipe technology
Saves 50% energy costs (tested by BRE)
Maintains temperatures across the whole building.
Halves installation time and costs
50% reduction in pipe fixings and insulation
No special installation required
Pipework can be cut as normal
Helps to reduce the risk of Legionella and other water borne pathogens
Can be used on hot and cold potable water systems

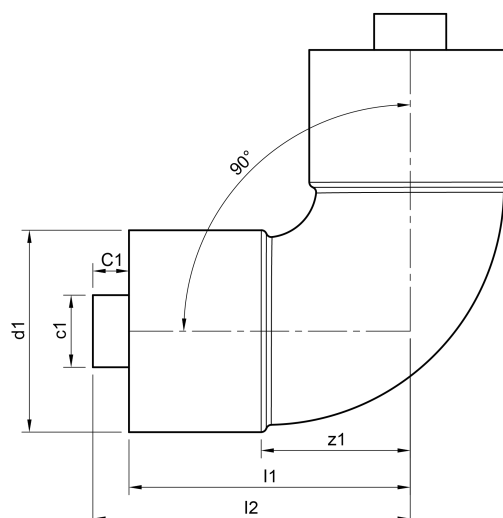
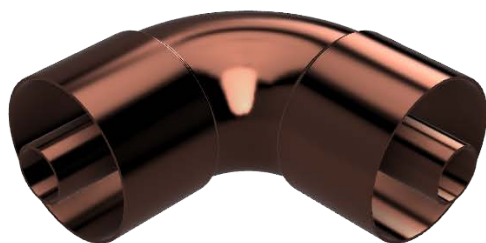
FINISHING OPTIONS

Copper CS

| SKU | DESC | I1 | I2 | I3 | d1 | z1 | c1 | C1 |
|---------|--------|-----|-----|-----|------|----|----|----|
| W8334CS | 15mm | 18 | 23 | 20 | 15 | 6 | 6 | 5 |
| W8335CS | 22mm | 26 | 31 | 28 | 22 | 9 | 8 | 5 |
| W8336CS | 28mm | 30 | 35 | 32 | 28 | 11 | 10 | 5 |
| W8337CS | 35mm | 39 | 44 | 41 | 35 | 15 | 15 | 5 |
| W8338CS | 42mm | 44 | 49 | 46 | 42 | 16 | 15 | 5 |
| W1538CS | 54mm | 54 | 59 | 56 | 54 | 21 | 22 | 5 |
| W1540CS | 76.1mm | 74 | 79 | 77 | 76.1 | 39 | 28 | 5 |
| W1655CS | 108mm | 112 | 117 | 115 | 108 | 61 | 35 | 5 |

90 Degree Elbow - Solder

ECODU©



SIZES

| | | |
|------------------------------------|----------|--------|
| Eco-Duo 90 Degree Elbow for 15mm * | W8319 CS | 0.27kg |
| Eco-Duo 90 Degree Elbow for 22mm * | W8320 CS | 0.35kg |
| Eco-Duo 90 Degree Elbow for 28mm * | W8321 CS | 0.38kg |
| Eco-Duo 90 Degree Elbow for 35mm * | W8322 CS | 0.62kg |
| Eco-Duo 90 Degree Elbow for 42mm * | W8323 CS | 0.70kg |
| Eco-Duo 90 Degree Elbow for 54mm | W1514 CS | 1.03kg |
| Eco-Duo 90 Degree Elbow for 66.7mm | W1515 CS | 1.48kg |
| Eco-Duo 90 Degree Elbow for 76.1mm | W1516 CS | 1.76kg |
| Eco-Duo 90 Degree Elbow for 108mm | W1650 CS | 2.40kg |

* Only available in packs of 10

MATERIALS

Body: Copper
Separators: 316 Stainless Steel

MAX PRESSURE

16 Bar

NOTES

Only for use with potable water
Only for use with pumped recirculated water

FEATURES AND BENEFITS

Patented Pipe-in-a-pipe technology
Saves 50% energy costs (tested by BRE)
Maintains temperatures across the whole building.
Halves installation time and costs
50% reduction in pipe fixings and insulation
No special installation required
Pipework can be cut as normal
Helps to reduce the risk of Legionella and other water borne pathogens
Can be used on hot and cold potable water systems

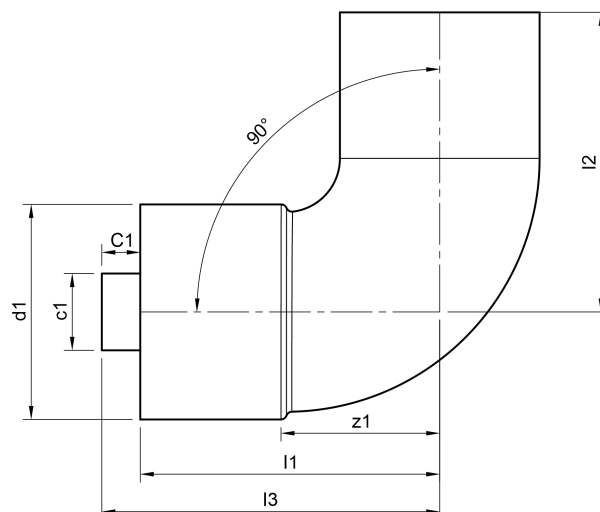
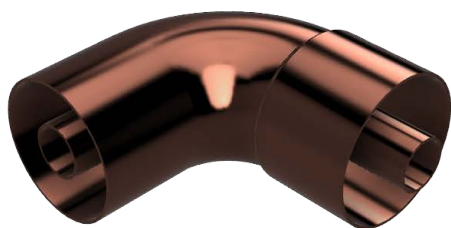
FINISHING OPTIONS

Copper CS

| SKU | DESC | l1 | l2 | d1 | z1 | c1 | C1 |
|----------|--------|-----|-----|------|-----|----|----|
| W8319 CS | 15mm | 30 | 35 | 15 | 18 | 6 | 5 |
| W8320 CS | 22mm | 43 | 48 | 22 | 27 | 8 | 5 |
| W8321 CS | 28mm | 53 | 58 | 28 | 34 | 10 | 5 |
| W8322 CS | 35mm | 67 | 72 | 35 | 43 | 15 | 5 |
| W8323 CS | 42mm | 79 | 84 | 42 | 51 | 15 | 5 |
| W1514 CS | 54mm | 99 | 104 | 54 | 65 | 22 | 5 |
| W1515 CS | 66.7mm | 116 | 121 | 66.7 | 81 | 22 | 5 |
| W1516 CS | 76.1mm | 127 | 132 | 76.1 | 92 | 28 | 5 |
| W1650 CS | 108mm | 179 | 184 | 108 | 131 | 35 | 5 |

90 Degree Street Elbow - Solder

ECODU©



SIZES

| | | |
|---|----------|--------|
| Eco-Duo 90 Degree Street Elbow for 15mm * | W8324 CS | 0.28kg |
| Eco-Duo 90 Degree Street Elbow for 22mm * | W8325 CS | 0.31kg |
| Eco-Duo 90 Degree Street Elbow for 28mm * | W8326 CS | 0.35kg |
| Eco-Duo 90 Degree Street Elbow for 35mm * | W8327 CS | 0.64kg |
| Eco-Duo 90 Degree Street Elbow for 42mm * | W8328 CS | 0.72kg |
| Eco-Duo 90 Degree Street Elbow for 54mm | W1522 CS | 1.05kg |
| Eco-Duo 90 Degree Street Elbow for 66.7mm | W1523 CS | 1.45kg |
| Eco-Duo 90 Degree Street Elbow for 76.1mm | W1524 CS | 1.77kg |
| Eco-Duo 90 Degree Street Elbow for 108mm | W1653 CS | 2.92kg |

* Only available in packs of 10

MATERIALS

Body: Copper
Separators: 316 Stainless Steel

MAX PRESSURE

16 Bar

NOTES

Only for use with potable water
Only for use with pumped recirculated water

FEATURES AND BENEFITS

Patented Pipe-in-a-pipe technology
Saves 50% energy costs (tested by BRE)
Maintains temperatures across the whole building.
Halves installation time and costs
50% reduction in pipe fixings and insulation
No special installation required
Pipework can be cut as normal
Helps to reduce the risk of Legionella and other water borne pathogens
Can be used on hot and cold potable water systems

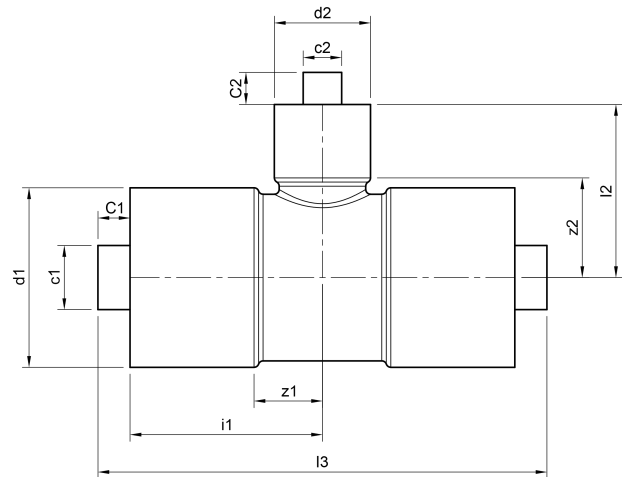
FINISHING OPTIONS

Copper CS

| SKU | DESC | l1 | l2 | l3 | d1 | z1 | c1 | C1 |
|----------|--------|-----|-----|-----|------|-----|----|----|
| W8324 CS | 15mm | 30 | 35 | 32 | 15 | 18 | 6 | 5 |
| W8325 CS | 22mm | 43 | 48 | 45 | 22 | 27 | 8 | 5 |
| W8326 CS | 28mm | 54 | 59 | 56 | 28 | 34 | 10 | 5 |
| W8327 CS | 35mm | 67 | 72 | 69 | 35 | 43 | 15 | 5 |
| W8328 CS | 42mm | 79 | 84 | 81 | 42 | 51 | 15 | 5 |
| W1522 CS | 54mm | 99 | 104 | 101 | 54 | 65 | 22 | 5 |
| W1523 CS | 66.7mm | 116 | 121 | 119 | 66.7 | 81 | 22 | 5 |
| W1524 CS | 76.1mm | 127 | 132 | 130 | 76.1 | 92 | 28 | 5 |
| W1653 CS | 108mm | 179 | 184 | 182 | 108 | 131 | 35 | 5 |

Reduced Tee Branch - Solder

ECODU©



SIZES

| | | |
|---|----------|--------|
| Eco-Duo Reduced Tee Branch for 22x15x22mm * | W8355 CS | 0.36kg |
| Eco-Duo Reduced Tee Branch for 28x15x28mm * | W8356 CS | 0.41kg |
| Eco-Duo Reduced Tee Branch for 28x22x28mm * | W8357 CS | 0.42kg |
| Eco-Duo Reduced Tee Branch for 35x15x35mm * | W8358 CS | 0.67kg |
| Eco-Duo Reduced Tee Branch for 35x22x35mm * | W8359 CS | 0.67kg |
| Eco-Duo Reduced Tee Branch for 35x28x35mm * | W8360 CS | 0.70kg |
| Eco-Duo Reduced Tee Branch for 42x15x42mm * | W8361 CS | 0.73kg |
| Eco-Duo Reduced Tee Branch for 42x22x42mm * | W8362 CS | 0.65kg |
| Eco-Duo Reduced Tee Branch for 42x28x42mm * | W8363 CS | 0.84kg |
| Eco-Duo Reduced Tee Branch for 54x22x54mm | W1645 CS | 1.10kg |
| Eco-Duo Reduced Tee Branch for 54x28x54mm | W1646 CS | 1.08kg |
| Eco-Duo Reduced Tee Branch for 54x35x54mm | W1647 CS | 1.11kg |
| Eco-Duo Reduced Tee Branch for 54x42x54mm | W1648 CS | 1.22kg |
| Eco-Duo Reduced Tee Branch for 76.1x35x76.1mm | W1664 CS | 2.0kg |
| Eco-Duo Reduced Tee Branch for 76.1x42x76.1mm | W1663 CS | 2.1kg |
| Eco-Duo Reduced Tee Branch for 76.1x54x76.1mm | W1662 CS | 2.2kg |
| Eco-Duo Reduced Tee Branch for 108x54x108mm | W1594 CS | 3.05kg |
| Eco-Duo Reduced Tee Branch for 108x76.1x108mm | W1596 CS | 3.23kg |

MATERIALS

Body: Copper
Separators: 316 Stainless Steel

MAX PRESSURE

16 Bar

NOTES

Only for use with potable water
Only for use with pumped recirculated water

FINISHING OPTIONS

Copper CS

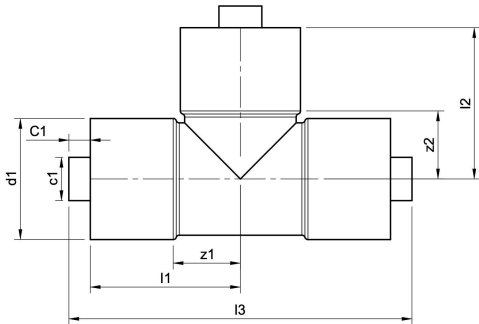
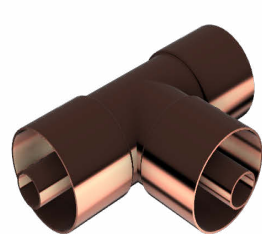
* Only available in packs of 10

FEATURES AND BENEFITS

- Patented Pipe-in-a-pipe technology
- Saves 50% energy costs (tested by BRE)
- Maintains temperatures across the whole building.
- Halves installation time and costs
- 50% reduction in pipe fixings and insulation
- No special installation required
- Pipework can be cut as normal
- Helps to reduce the risk of Legionella and other water borne pathogens
- Can be used on hot and cold potable water systems

| SKU | DESC | I1 | I2 | I3 | d1 | d2 | z1 | z2 | c1 | C1 | c2 | C2 |
|----------|----------------|----|-----|-----|------|------|----|----|----|----|----|----|
| W8355 CS | 22x15x22mm | 29 | 24 | 68 | 22 | 15 | 9 | 12 | 8 | 5 | 6 | 5 |
| W8356 CS | 28x15x28mm | 35 | 27 | 80 | 28 | 15 | 10 | 15 | 10 | 5 | 6 | 5 |
| W8357 CS | 28x22x28mm | 33 | 32 | 76 | 28 | 22 | 13 | 15 | 10 | 5 | 8 | 5 |
| W8358 CS | 35x15x35mm | 34 | 31 | 78 | 35 | 15 | 10 | 19 | 15 | 5 | 6 | 5 |
| W8359 CS | 35x22x35mm | 38 | 35 | 86 | 35 | 22 | 14 | 19 | 15 | 5 | 8 | 5 |
| W8360 CS | 35x28x35mm | 40 | 39 | 90 | 35 | 28 | 16 | 20 | 15 | 5 | 10 | 5 |
| W8361 CS | 42x15x42mm | 39 | 34 | 88 | 42 | 15 | 11 | 23 | 15 | 5 | 6 | 5 |
| W8362 CS | 42x22x42mm | 42 | 39 | 94 | 42 | 22 | 14 | 23 | 15 | 5 | 8 | 5 |
| W8363 CS | 42x28x42mm | 43 | 43 | 96 | 42 | 28 | 17 | 24 | 15 | 5 | 10 | 5 |
| W1645 CS | 54x22x54mm | 47 | 45 | 104 | 54 | 22 | 14 | 30 | 22 | 5 | 8 | 5 |
| W1646 CS | 54x28x54mm | 50 | 49 | 110 | 54 | 28 | 17 | 30 | 22 | 5 | 10 | 5 |
| W1647 CS | 54x35x54mm | 53 | 54 | 116 | 54 | 35 | 20 | 30 | 22 | 5 | 15 | 5 |
| W1648 CS | 54x42x54mm | 57 | 58 | 124 | 54 | 42 | 24 | 30 | 22 | 5 | 15 | 5 |
| W1664 CS | 76.1x35x76.1mm | 62 | 72 | 134 | 76.1 | 35 | 27 | 47 | 28 | 5 | 15 | 5 |
| W1663 CS | 76.1x42x76.1mm | 65 | 76 | 140 | 76.1 | 42 | 30 | 47 | 28 | 5 | 15 | 5 |
| W1662 CS | 76.1x54x76.1mm | 71 | 81 | 152 | 76.1 | 54 | 36 | 47 | 28 | 5 | 22 | 5 |
| W1594 CS | 108x54x108mm | 87 | 99 | 184 | 108 | 54 | 38 | 65 | 22 | 5 | 22 | 5 |
| W1596 CS | 108x76.1x108mm | 98 | 100 | 206 | 108 | 76.1 | 49 | 65 | 35 | 5 | 28 | 5 |

Equal Tee - Solder



SIZES

| | | |
|------------------------------|----------|---------|
| Eco-Duo Equal Tee for 15mm * | W8364 CS | 0.510kg |
| Eco-Duo Equal Tee for 22mm * | W8365 CS | 0.761kg |
| Eco-Duo Equal Tee for 28mm * | W8366 CS | 0.912kg |
| Eco-Duo Equal Tee for 35mm * | W8367 CS | 1.584kg |
| Eco-Duo Equal Tee for 42mm * | W8368 CS | 1.819kg |
| Eco-Duo Equal Tee for 54mm | W1546 CS | 2.422kg |
| Eco-Duo Equal Tee for 66.7mm | W1547 CS | 2.848kg |
| Eco-Duo Equal Tee for 76.1mm | W1548 CS | 3.779kg |
| Eco-Duo Equal Tee for 108mm | W1656 CS | 5.601kg |

* Only available in packs of 10

MATERIALS

Body: Copper
Separators: 316 Stainless Steel

MAX PRESSURE

16 Bar

NOTES

Only for use with potable water
Only for use with pumped recirculated water

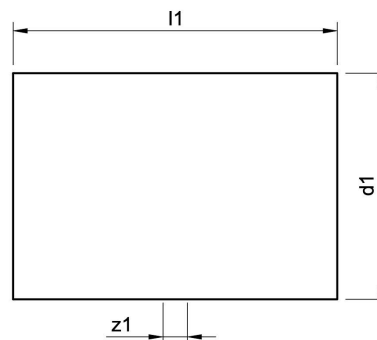
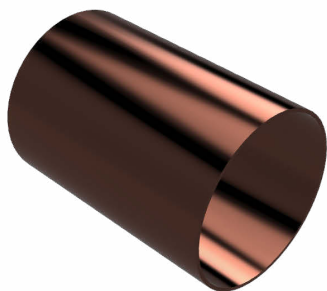
FEATURES AND BENEFITS

- Patented Pipe-in-a-pipe technology
- Saves 50% energy costs (tested by BRE)
- Maintains temperatures across the whole building.
- Halves installation time and costs
- 50% reduction in pipe fixings and insulation
- No special installation required
- Pipework can be cut as normal
- Helps to reduce the risk of Legionella and other water borne pathogens
- Can be used on hot and cold potable water systems

FINISHING OPTIONS

Copper CS

| SKU | DESC | I1 | I2 | I3 | d1 | z1 | z2 | c1 | C1 |
|----------|--------|-----|-----|-----|------|----|----|----|----|
| W8364CS | 15mm | 20 | 20 | 50 | 15 | 8 | 8 | 5 | 5 |
| W8365 CS | 22mm | 29 | 29 | 68 | 22 | 12 | 12 | 5 | 5 |
| W8366 CS | 28mm | 35 | 35 | 80 | 28 | 15 | 15 | 5 | 5 |
| W8367 CS | 35mm | 44 | 44 | 98 | 35 | 20 | 20 | 5 | 5 |
| W8368 CS | 42mm | 52 | 52 | 114 | 42 | 24 | 24 | 5 | 5 |
| W1546 CS | 54mm | 63 | 63 | 136 | 54 | 30 | 30 | 5 | 5 |
| W1547 CS | 66.7mm | 74 | 74 | 158 | 66.7 | 39 | 39 | 5 | 5 |
| W1548 CS | 76.1mm | 82 | 82 | 174 | 76 | 47 | 47 | 5 | 5 |
| W1656 CS | 108mm | 114 | 114 | 238 | 108 | 65 | 65 | 5 | 5 |



SIZES

| | | |
|--------------------------------------|----------|--------|
| Eco-Duo Straight Coupling for 15mm * | W8369 CS | 0.03kg |
| Eco-Duo Straight Coupling for 22mm * | W8370 CS | 0.05kg |
| Eco-Duo Straight Coupling for 28mm * | W8371 CS | 0.06kg |
| Eco-Duo Straight Coupling for 35mm * | W8372 CS | 0.09kg |
| Eco-Duo Straight Coupling for 42mm * | W8373 CS | 0.13kg |
| Eco-Duo Straight Coupling for 54mm | W1572 CS | 0.19kg |
| Eco-Duo Straight Coupling for 66.7mm | W1573 CS | 0.44kg |
| Eco-Duo Straight Coupling for 76.1mm | W1574 CS | 0.19kg |
| Eco-Duo Straight Coupling for 108mm | W1657 CS | 1.26kg |

* Only available in packs of 10

FEATURES AND BENEFITS

- Patented Pipe-in-a-pipe technology
- Saves 50% energy costs (tested by BRE)
- Maintains temperatures across the whole building.
- Halves installation time and costs
- 50% reduction in pipe fixings and insulation
- No special installation required
- Pipework can be cut as normal
- Helps to reduce the risk of Legionella and other water borne pathogens
- Can be used on hot and cold potable water systems

MATERIALS

Body: Copper
Separators: 316 Stainless Steel

MAX PRESSURE

16 Bar

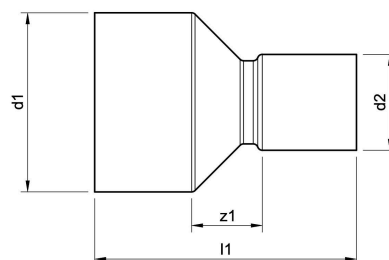
NOTES

Only for use with potable water
Only for use with pumped recirculated water

FINISHING OPTIONS

Copper CP

| SKU | DESC | l1 | d1 | z1 |
|----------|--------|-----|------|----|
| W8369CS | 15mm | 26 | 15 | 2 |
| W8370 CS | 22mm | 35 | 22 | 2 |
| W8371 CS | 28mm | 41 | 28 | 2 |
| W8372 CS | 35mm | 51 | 35 | 2 |
| W8373CS | 42mm | 61 | 42 | 3 |
| W1572 CS | 54mm | 71 | 54 | 3 |
| W1573 CS | 66.7mm | 73 | 66.7 | 3 |
| W1574 CS | 76.1mm | 73 | 76.1 | 3 |
| W1657 CS | 108mm | 101 | 108 | 3 |



SIZES

| | | |
|--|----------|--------|
| Eco-Duo Coupling Reducer for 22mm x 15mm * | W8350 CS | 0.05kg |
| Eco-Duo Coupling Reducer for 28mm x 22mm * | W8351 CS | 0.07kg |
| Eco-Duo Coupling Reducer for 28mm x 15mm * | W8352 CS | 0.07kg |
| Eco-Duo Coupling Reducer for 35mm x 28mm * | W8353 CS | 0.09kg |
| Eco-Duo Coupling Reducer for 42mm x 35mm * | W8354 CS | 0.14kg |
| Eco-Duo Coupling Reducer for 54mm x 42mm | W1652 CS | 0.21kg |

* Only available in packs of 10

FEATURES AND BENEFITS

- Patented Pipe-in-a-pipe technology
- Saves 50% energy costs (tested by BRE)
- Maintains temperatures across the whole building.
- Halves installation time and costs
- 50% reduction in pipe fixings and insulation
- No special installation required
- Pipework can be cut as normal
- Helps to reduce the risk of Legionella and other water borne pathogens
- Can be used on hot and cold potable water systems

MATERIALS

Body: Copper
Separators: 316 Stainless Steel

MAX PRESSURE

16 Bar

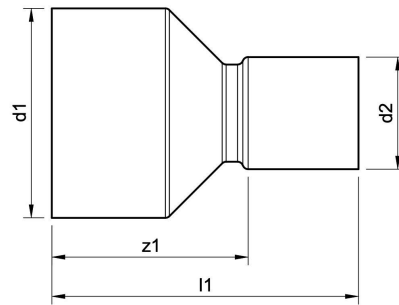
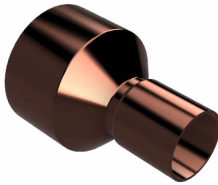
NOTES

Only for use with potable water
Only for use with pumped recirculated water

FINISHING OPTIONS

Copper CS

| SKU | DESC | l1 | d1 | d2 | z1 |
|---------|---------|----|----|----|----|
| W8350CS | 22x15mm | 34 | 22 | 15 | 5 |
| W8351CS | 28x22mm | 41 | 28 | 22 | 6 |
| W8352CS | 28x15mm | 41 | 28 | 15 | 10 |
| W8353CS | 35x28mm | 50 | 35 | 28 | 7 |
| W8354CS | 42x35mm | 59 | 42 | 35 | 7 |
| W1652CS | 54x42mm | 73 | 54 | 42 | 12 |



SIZES

| | | |
|---|----------|--------|
| Eco-Duo Coupling Street Reducer for 28mm x 22mm * | W8344 CS | 0.05kg |
| Eco-Duo Coupling Street Reducer for 35mm x 22mm * | W8345 CS | 0.07kg |
| Eco-Duo Coupling Street Reducer for 35mm x 28mm * | W8346 CS | 0.09kg |
| Eco-Duo Coupling Street Reducer for 42mm x 22mm * | W8347 CS | 0.11kg |
| Eco-Duo Coupling Street Reducer for 42mm x 28mm * | W8348 CS | 0.12kg |
| Eco-Duo Coupling Street Reducer for 42mm x 35mm * | W8349 CS | 0.12kg |
| Eco-Duo Coupling Street Reducer for 54mm x 35mm | W1557 CS | 0.16kg |
| Eco-Duo Coupling Street Reducer for 54mm x 42mm | W1558 CS | 0.19kg |
| Eco-Duo Coupling Street Reducer for 66.7mm x 28mm | W1559 CS | 0.97kg |
| Eco-Duo Coupling Street Reducer for 66.7mm x 35mm | W1560 CS | 0.97kg |
| Eco-Duo Coupling Street Reducer for 66.7mm x 42mm | W1561 CS | 0.97kg |
| Eco-Duo Coupling Street Reducer for 66.7mm x 54mm | W1562 CS | 1.99kg |
| Eco-Duo Coupling Street Reducer for 76.1mm x 35mm | W1563 CS | 1.07kg |
| Eco-Duo Coupling Street Reducer for 76.1mm x 42mm | W1564 CS | 1.07kg |
| Eco-Duo Coupling Street Reducer for 76.1mm x 54mm | W1565 CS | 1.08kg |
| Eco-Duo Coupling Street Reducer for 76.1mm x 66.7mm | W1566 CS | 1.16kg |
| Eco-Duo Coupling Street Reducer for 108mm x 42mm | W8386 CS | 0.93kg |
| Eco-Duo Coupling Street Reducer for 108mm x 54mm | W8387 CS | 0.94kg |
| Eco-Duo Coupling Street Reducer for 108mm x 66.7mm | W8389 CS | 1.05kg |
| Eco-Duo Coupling Street Reducer for 108mm x 76.1mm | W8390 CS | 1.10kg |

* Only available in packs of 10

MATERIALS

Body: Copper
Separators: 316 Stainless Steel

MAX PRESSURE

16 Bar

NOTES

Only for use with potable water
Only for use with pumped recirculated water

FINISHING OPTIONS

Copper CS

FEATURES AND BENEFITS

Patented Pipe-in-a-pipe technology
Saves 50% energy costs (tested by BRE)
Maintains temperatures across the whole building.
Halves installation time and costs
50% reduction in pipe fixings and insulation
No special installation required
Pipework can be cut as normal
Helps to reduce the risk of Legionella and other water borne pathogens
Can be used on hot and cold potable water systems

Coupling Street Reducer - Solder

| SKU | DESC | l1 | d1 | d2 | z1 |
|----------|------------|-----|------|------|----|
| W8344 CS | 28-15mm | 41 | 28 | 15 | 29 |
| W8345 CS | 35-22mm | 52 | 35 | 22 | 36 |
| W8346CS | 35-28mm | 53 | 35 | 28 | 34 |
| W8347CS | 42-22mm | 61 | 42 | 22 | 44 |
| W8348CS | 42-28mm | 60 | 42 | 28 | 41 |
| W8349CS | 42-35mm | 62 | 42 | 35 | 38 |
| W1557 CS | 54-35mm | 72 | 54 | 35 | 48 |
| W1558 CS | 54-42mm | 75 | 54 | 42 | 47 |
| W1563 CS | 76.1-35mm | 86 | 76.1 | 35 | 61 |
| W1564 CS | 76.1-42mm | 86 | 76.1 | 42 | 58 |
| W1565 CS | 76.1-54mm | 85 | 76.1 | 54 | 52 |
| W8387 CS | 108-54mm | 116 | 108 | 54 | 83 |
| W8390 CS | 108-76.1mm | 108 | 108 | 76.1 | 72 |



0141 280 9585 - info@water-kinetics.co.uk
<https://www.water-kinetics.co.uk>