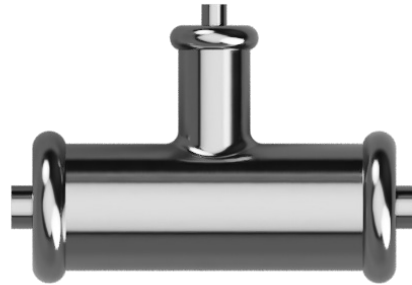


Specification Clause

Date Created: 17/06/2022

Eco Duo Reduced Tee Branch

Eco Duo Reduced Tee Branch for 22x22x15mm
Eco Duo Reduced Tee Branch for 28x28x15mm
Eco Duo Reduced Tee Branch for 28x28x22mm
Eco Duo Reduced Tee Branch for 35x35x15mm
Eco Duo Reduced Tee Branch for 35x35x22mm
Eco Duo Reduced Tee Branch for 35x35x28mm
Eco Duo Reduced Tee Branch for 42x42x15mm
Eco Duo Reduced Tee Branch for 42x42x22mm
Eco Duo Reduced Tee Branch for 42x42x35mm
Eco Duo Reduced Tee Branch for 54x54x22mm
Eco Duo Reduced Tee Branch for 54x54x28mm
Eco Duo Reduced Tee Branch for 54x54x35mm
Eco Duo Reduced Tee Branch for 54x54x42mm
Eco Duo Reduced Tee Branch for 108x108x54mm
Eco Duo Reduced Tee Branch for 108x108x66.7mm
Eco Duo Reduced Tee Branch for 108x108x76.1mm



The fittings and tube shall be drawn from the Eco Duo Copper Press fittings (available from Water Kinetics), manufactured from copper with EPDM 'O' rings. These fittings are for jointing copper tube and are available in sizes 15mm to 108mm. The fittings shall incorporate a "leak before press" facility offering a final check of the system to provide instant identification of joints that are assembled correctly but left unpressed. The fittings shall also offer electrical continuity.

Where pressure/temperature gauges, binder points or drain offs etc are required the Eco Duo Confluence Tee should be used.

Tube Compatibility

Eco Duo Copper fittings are suitable for connecting to the following:
BS EN1057 – copper pipes with a hardness rating R250 (half hard) BS EN1057 – Copper pipe with a hardness rating of R290 (hard).

Specification Clause

Date Created: 17/06/2022

Copper Fittings

Temperature (Degrees C)	Maximum Pressure
-24 to 100	16 Bar (throughout temperature range)

2.0 - Installation

To be installed in accordance with water and building regulations.

2.1 - Electrical Continuity

All metallic pipe work should comply with the equipotential bonding requirements of the current edition of the IEE wiring regulations (BS 7671: 2001). After all plumbing work has been completed continuity checks are to be conducted by a qualified electrician in accordance with regulations.

2.2 - Heat Free

The Eco-Duo Ranges offer heat free jointing - Do not braze Eco Duo copper tubes or fittings.

2.3 - Insulation

Water Supply (Water Fittings) Regulations and Building Regulations 1999. Always use suitable insulation

2.4 - Dissimilar Metals

The UK Water Regulations recommend that tubes and fittings made from different types of metals shall not be connected directly together except where galvanic action is unlikely or where effective measures are taken to prevent it. Galvanic corrosion is a process whereby the materials that come in to contact with each other oxidises or corrodes. If you are in doubt, we recommend you refer to the full and detailed information provided in Water Regulations Guide (G2.11 and R3. or by contacting the Water Regulations Advisory Scheme info@wras.co.uk.

Specification Clause

Date Created: 17/06/2022

2.5 - Press Fit Tooling

Water Kinetics Ltd do not manufacture press fit tools but REMS and NOVOPRESS are the two recommended manufacturers for the Eco-Duo ranges. (Please check Eco-Duo installation information for correct jaw and power supply details).

2.6 - Pre-Installation - Health and Safety

Before starting work on any installation, a risk assessment must be made to consider the possibility of operational limits being exceeded and reduction or elimination of any potential hazards. Protective clothing and safety equipment must be utilised as appropriate to the hazard presented by the nature of the process of the installation. The system shall be installed all in accordance with the manufacturer's installation recommendations.

3.0 - Testing

Eco-Duo Copper installations may be tested to 1.5 times their normal working pressure at ambient temperature to a maximum of 16 bar. If higher test pressures are required advice should be sought from Water Kinetics Limited.

3.1 - Additives

It is strongly recommended to consult a commissioning engineer in conjunction with the manufacturer prior to their use.

3.2 - Warranty

Eco-Duo is guaranteed against all manufacturing defects for 25 years when installed as a system using Eco-Duo copper tube.

3.3 - Certification

Eco-Duo Copper Fittings have WRAS and KIWA approval on all sizes.

3.4 - Storage

Eco-Duo Copper tube and fittings must be protected against dirt and damage whilst in transit and being stored. The fittings should be kept in the packaging until point of use.

4.0 - Contact Details

For further details please contact our technical department:

0141 280 9585

01/02/2022

Water Kinetics Limited, 7 Greenbank Road, Darvel,
KA17 0NN